

# ALLENDALE



*"Red Meat Specialists"*

# DAYS

WHITEFACE

Poll Herefords • White Suffolks



## 16th ANNUAL Poll Hereford Production Sale

24th February, 2014 at 1.30pm  
Bordertown, South Australia



DECTOMAX



## **SELLING AGENTS**



Ross Milne	Hamilton	0408 057 558
Justin Robertson	Bordertown	0429 571 643
Steve Doecke	Keith	0427 817 323
Tom Penna	Adelaide	0428 854 708
Chris Howie	Adelaide	0408 842 331
Tony Wetherall	Adelaide	0427 390 001
Andy McGeoch	Orange	0418 737 470
Josh Crosby	Dubbo	0428 634 658



Malcolm Scroop	Strathalbyn	0428 838 363
Graeme Hampel	Bordertown	0408 838 292
Trevor Driver	Adelaide	0428 241 049
Gordon Wood	Murray Bridge	0408 813 215
Kevin Norris	Albury	0419 482 151
Peter Godbolt	Albury	0457 591 929
John Setttee	Dubbo	0408 297 368
Andrew Sloan	Melbourne	0428 522 204

## **4% REBATE TO OUTSIDE AGENTS**

---

The vendors and or their agents do not give any warranty as to errors or omissions, if any, in these particulars which they believe to be accurate when compiled. Prospective purchasers should satisfy themselves by inspection or otherwise as to the accuracy of the particulars.

---

**DAYS**  
**WHITEFACE**

Poll Herefords • White Suffolks

**ALLENDALE**



**A.E. DAY & SONS**

***"Red Meat Specialists"***

---

# **80 PERFORMANCE RECORDED BULLS**

**OFFERED BY:**

**DAYS WHITEFACE**

**CONTACT**

**Lachlan Day - Phone 08 8752 1630**

**Mobile 0428 521 630 | Email [lday@dayswhiteface.com.au](mailto:lday@dayswhiteface.com.au)**

**or Graham Day on 08 8752 2554**

**ALLENDALE**

**CONTACT**

**Alastair Day - Phone 08 8752 1194**

**Mobile 0429 782 711 | Email [allendale@allendalestuds.com](mailto:allendale@allendalestuds.com)**

**or Graham Day on 08 8752 2554**

**SALE VENUE is situated 8kms south of Bordertown on the Naracoorte Road.**

## **Buyers Information**

### **Inspection**

All cattle will be available for inspection from 11.00am on the morning of the Sale, however inspection can be arranged before hand by appointment.

### **Luncheon**

Will be available on the property.

### **Delivery**

While every care will be taken, no responsibility can be accepted whilst awaiting delivery.

### **Transfers**

Please indicate on the Buyers Instruction Slip if a transfer is required.

### **Health**

All cattle are officially government confirmed as TB free and Brucellosis free. The property has a beef only status for Bovine Johnes Disease. All sale cattle treated with 7 in 1 (booster due Autumn 2014). All sale cattle treated with Dectomax, January 2014. All sale bulls ear notch tested as NOT persistently infected with the BVDV virus. All bulls have been vaccinated with Pestiguard and Vibrovax.

### **Interstate Purchasers**

The Vendor agrees to hold any stock for interstate buyers until any necessary tests have been completed. Expenses incurred payable by the Purchasers. Should any cattle react, the sale will be cancelled.

### **Accommodation and Transport**

The Auctioneers or vendors will be pleased to arrange accommodation in Adelaide or Bordertown.

### **Buying Orders**

The Auctioneer's Stud Stock staff are well acquainted with the herd. Buying orders will be diligently executed by officers experienced in stud beef cattle practice.

### **Insurance**

Can be arranged for transit and/or periods up to twelve (12) months cover.

### **Rebate**

A rebate of four percent (4%) will be allowed by the Vendors to Interstate Agents (other than interstate representatives of Selling Agents) and South Australian Associated Agents on any purchase they influence, provided that they advise the Selling Agent in writing and make settlement giving the names of the Purchasers not later than twelve (12) hours prior to the sale.

### **BUYER'S INSTRUCTION SLIP - see Page 68**

AVERAGE EBVS FOR 2012 BORN CALVES								\$ INDEX VALUE	
CE DIR	CE DTRS	GL	BWT	200W	400W	600W	MCW	SUP MKT	+\$68
-0.2	+1.1	-0.1	+4.3	+28	+45	+65	+61	GRASS FED	+\$63
MILK	SS	CWT	EMA	RIB	RUMP	RBV%	IMF%	GRAIN FED	+\$69
+13	+1.5	+40	+3.0	+0.2	+0.2	+0.8	+0.1	EU	+\$77

# Breedplan Explanation

EBV's are provided for the following traits...

<b>CE DIR</b>	Calving Ease Direct. Indicates how this animal influences the birth of its progeny. Positive EBV's indicate easier calving.
<b>CE DTRS</b>	Calving Ease Daughters. Indicates how well the animal produces daughters that have easier calving.
<b>GL</b>	Lower Gestation Length EBV's indicate easier calving and increased growth after birth.
<b>SS</b>	Scrotal size is an indicator of male fertility in regards to semen quality and quantity. SS is also positively associated with female fertility.
<b>Birth Weight</b>	The lower the birthweight EBV, the lighter is the birthweight potential of the progeny.
<b>Genetic Milk</b>	Reflects extra calf weight at weaning due to the genetic influence a sire has on his daughters milking and mothering ability.
<b>200 Day Weight</b>	Indicates the relative weight advantage of a sire at 8-10 months of age.
<b>400 Day Weight</b>	Indicates the relative weight advantage of a sire at yearling age.
<b>600 Day Weight</b>	The best single estimate of an animals genetic merit for growth beyond yearling age.
<b>MWT</b>	Mature Cow Weight is an estimate of the genetic difference in cow weight at 5 years of age.
<b>CWT</b>	Estimates the genetic difference in carcase weight and is adjusted to 650 days of age.
<b>Fat Depth</b>	Bulls with negative (-) EBV's for this trait are expected to produce relatively leaner progeny than bulls with positive (+) EBV's.
<b>EMA</b>	Bulls with positive (+) EBV's for this trait are expected to produce more muscular progeny than bulls with negative (-) EBV's.
<b>Retail Beef Yield</b>	Bulls with larger EBV's are expected to produce progeny with higher yielding carcasses.
<b>Intramuscular Fat %</b>	Positive EBV's indicate likelihood of more intramuscular fat.
<b>Accuracies</b>	The accuracy provides a measure of the reliability of the EBV. The higher the value, the less likelihood of the EBV changing with the addition of more performance records on the animal.
<b>Selection Indexes</b>	An index ranks an animal for single production goal - profit. They take the hard work out of knowing how much emphasis to give each of the available growth, maternal, carcase and fertility EBV's when selecting parent animals. An index is a composite EBV of traits best suited to a particular production system and target market.
<b>Supermarket Index</b>	Targeting the domestic supermarket trade. Steers are either finished on grass or grain (eg 50-70 days). Steers are assumed marketed at 450kg live weight (250kg HSCW and 12mm P8 fat depth) at 17 months of age. Daughters are retained for breeding. In response to industry feedback regarding eating quality and tenderness, a small premium has been placed on marbling.
<b>Grass Fed</b>	Targeting pastured finished steers. Steers are assumed marketed at 600kg live weight (330kg HSCW and 8mm P8 fat depth) at 23 months of age. Daughters are retained for breeding. In response to industry feedback regarding eating quality and tenderness, a small premium has been placed on marbling.
<b>Grain Fed</b>	Targeting pastured grown steers with a 125 day feedlot finishing period for the grain fed markets. Steers are assumed marketed at 600kg live weight (330kg HSCW and 20mm P8 fat) at 20 months of age. Daughters are retained for breeding. There is a significant premium if steers reach a marble score of 2 or greater.
<b>EU Index</b>	Targeting pastured finished steers for the EU market. Steers are assumed marketed at 620kg live weight (340kg HSCW and 14mm P8 fat depth) at 24 months of age. Daughters are retained for breeding. There is no marbling requirement.

## ALLEDALE / DAYS WHITEFACE 2014

# Reference Sire

### REFERENCE SIRE - DAYS BEDFORD F14 (AI) (P)

**F14**

**BIRTH DATE - 23/04/2010**

VALMA WALKER (P)  
SOUTH BUKALONG WALKER 6 (AI) (P)  
SOUTH BUKALONG CIRCE 73 (P)  
**SIRE - SOUTH BUKALONG WALLACE 2 (P)**  
WIRRUNA SHAW (AI) (P)  
SOUTH BUKALONG VICTORIA 152 (P)  
SOUTH BUKALONG VICTORIA 109 (P)

MOUNT DIFFICULT FELLIS Y12 (AI) (P)  
WIRRUNA ABERCORN (AI) (P)  
WIRRUNA GOLDEN VANITY R94 (AI) (P)  
**DAM - ALLENDALE MARSHALL LASS D100 (AI) (P)**  
ALLENDALE OVERTON (P)  
ALLENDALE MARSHALL LASS Z20 (P)  
ALLENDALE MARSHALL LASS W32 (AI) (P)

2013 SUMMER GROUP BREEDPLAN EBVS								\$ INDEX VALUE	
CE DIR	CE DTRS	GL	BWT	200W	400W	600W	MCW	SUP MKT	+\$109
<b>+1.5</b>	<b>+4.6</b>	<b>-4.6</b>	<b>+4.2</b>	<b>+39</b>	<b>+55</b>	<b>+84</b>	<b>+64</b>	GRASS FED	+\$107
57%	47%	75%	82%	78%	78%	78%	71%	GRAIN FED	+\$124
MILK	SS	CWT	EMA	RIB	RUMP	RBV%	IMF%	EU	+\$119
<b>+18</b>	<b>+2.1</b>	<b>+61</b>	<b>+5.5</b>	<b>+0.7</b>	<b>+1.0</b>	<b>+1.4</b>	<b>+1.0</b>		
58%	82%	68%	60%	64%	68%	62%	64%		

Bedford F14 was used as a yearling and sold at our annual sale for \$9,000 to Deeck Pastoral Tasmania. We continue to use him by AI. His maternal brother G26 was Reserve Grand Champion Wodonga 2013 selling for \$20,000 to Allegria Poll Herefords. Bedford F14 is in the top 1% of the breed for gestation length and all indexes. He is in top 5% for 200 day wt, carcass wt, EMA and IMF. He has 5 sons in the sale.

# Reference Sire

### REFERENCE SIRE - ALLENDALE SUPERSTAR B26 (AI) (ET) (P)

**B26**

**BIRTH DATE - 08/02/2006**

BOBANKEN PACIFIC P143 (AI) (P)  
ALLENDALE KING KONG 2 (S)  
ALLENDALE DAISY M7 (H)  
**SIRE - ALLENDALE NATIONAL W168 (P)**  
ALLENDALE FEDERATION 3 (AI) (P)  
ALLENDALE CORA R22 (P)  
ALLENDALE CORA N100 (P)

VENA PARK JACKPOT (H)  
VENA PARK SHARKA (H)  
WALLAMUMBI VICTORIA 348 (HPR) (H)  
**DAM - ALLENDALE DAWN T60 (AI) (P)**  
DAVIS 80U FACSIMILE 14X (IMP CAN) (P)  
ALLENDALE DAWN N159 (AI) (P)  
ALLENDALE DAWN L2 (P)

2013 SUMMER GROUP BREEDPLAN EBVS								\$ INDEX VALUE	
CE DIR	CE DTRS	GL	BWT	200W	400W	600W	MCW	SUP MKT	+\$86
<b>+2.4</b>	<b>+1.0</b>	<b>-0.4</b>	<b>+3.2</b>	<b>+32</b>	<b>+55</b>	<b>+70</b>	<b>+72</b>	GRASS FED	+\$86
72%	64%	67%	94%	90%	90%	90%	81%	GRAIN FED	+\$96
MILK	SS	CWT	EMA	RIB	RUMP	RBV%	IMF%	EU	+\$94
<b>+12</b>	<b>+1.5</b>	<b>+51</b>	<b>+3.7</b>	<b>+0.9</b>	<b>+1.7</b>	<b>-0.1</b>	<b>+1.0</b>		
75%	92%	79%	72%	75%	79%	73%	76%		

Superstar B26 has been a consistent performer leaving cattle of a moderate size with great muscle expression, a little extra fat and great skin and hair type. We have also used an ET brother B28. Superstar B26 is in the top 5% of the breed for IMF, supermarket, grassfed and grainfed indexes. He has 10 sons on offer.

# Reference Sire

## REFERENCE SIRE - ALLENDALE WATERHOUSE D1 (P)

D1

BIRTH DATE - 04/02/2008

ALLENDALE KING KONG 2 (S)  
ALLENDALE ROSEMOUNT 2 (AI) (P)  
ALLENDALE FANCY S19 (AI) (P)  
**SIRE - ALLENDALE VAGABOND A74 (AI) (P)**  
MARGFRED PARK CHICAGO Q80 (ET) (P)  
SUZELLE MARLINE U54 (AI) (ET) (P)  
ALLENDALE MARLINE N14 (AI) (P)

DAVIS 28U FAIRPLAY 610F (IMP CAN) (ET) (P)  
ALLENDALE LANDLORD 3 (AI) (P)  
ALLENDALE LYDIA N23 (AI) (P)  
**DAM - ALLENDALE MARLINE X185 (P)**  
4K SURVIVOR (IMP USA) (S)  
ALLENDALE MARLINE U46 (AI) (P)  
ALLENDALE MARLINE P68 (P)

2013 SUMMER GROUP BREEDPLAN EBVS								\$ INDEX VALUE	
CE DIR	CE DTRS	GL	BWT	200W	400W	600W	MCW	SUP MKT	+\$108
-0.7	+3.3	-1.8	+4.6	+39	+67	+98	+106	GRASS FED	+\$104
74%	62%	95%	97%	95%	95%	96%	87%	GRAIN FED	+\$118
MILK	SS	CWT	EMA	RIB	RUMP	RBV%	IMF%	EU	+\$128
+12	+4.2	+66	+6.5	-0.6	-0.6	+1.5	+0.7		
78%	94%	89%	83%	83%	88%	75%	87%		

Waterhouse was Junior and Grand Champion at Sydney 2009. Waterhouse sired Calibre, 2013 Dubbo Grand Champion, selling for a record \$90,000 to Bowen and Melville Park. His 12 sons sold to date average \$19,250. Waterhouse is a trait leader for gestation length, 200, 400 & 600 day wt, scrotal size, EMA and IMF. He is also in the top 1% for all indexes. He has 8 sons on offer.



## ALLENDALE / DAYS WHITEFACE 2014

# Reference Sire

### REFERENCE SIRE - HARVIE TAILOR MADE ET 7W (IMP CAN) (AI) (P) H7W

**BIRTH DATE - 28/01/2009**

LEELANDS TRANSITION T7 (P)  
KAIRURU ABERDEEN 03 0047 (IMP NZL) (P)  
KAIRURU PLUM T44 (P)  
**SIRE - HARVIE TRAVELER 69T (IMP CAN) (P)**  
LEVELDALE KODIAK 23C ET 19K (P)  
HARVIE PEARL 129P (P)  
EASTON 26Y IRON LADY 43A (P)

REMITALL KEYNOTE 20X (IMP CAN) (P)  
HARVIE DEYNOTE 61D (P)  
MISS CRAIGIE TRUSTMARK 10Y (P)  
**DAM - HARVIE MISS FIREFLY 51F (IMP CAN) (P)**  
DURALTA 359S NYLON 16W (P)  
HARVIE MISS NYLON 1Y (P)  
CHSF 4R MISS CHOICE 11U (P)

2013 SUMMER GROUP BREEDPLAN EBVS								\$ INDEX VALUE	
CE DIR	CE DTRS	GL	BWT	200W	400W	600W	MCW	SUP MKT	
-0.1		-0.2	+6.0	+37	+60	+80	+81		+\$78
46%		79%	89%	84%	82%	80%	66%	GRASS FED	+\$69
MILK	SS	CWT	EMA	RIB	RUMP	RBY%	IMF%	GRAIN FED	+\$67
+15	+2.3	+50	+3.8	+0.0	-0.6	+1.2	-0.9		
71%	74%	65%	53%	58%	59%	50%	58%	EU	+\$96

Tailor Made was selected to introduce the famous Firefly 51F into our herd. Tailor Made has consistently bred long bodied, meaty cattle with exceptional hind leg structure. Tailor Made progeny won the Sires Progeny group at Sydney Royal 2013 (see photo page 15). Tailor Made is a trait leader for 400 Day wt. Tailor Made is the sire of eight bulls in this years catalogue.

# Reference Sire

### REFERENCE SIRE - ALLENDALE YALLAROI 2 (AI) (TW) (P)

**E25**

**BIRTH DATE - 20/04/2009**

ALLENDALE KING KONG 2 (S)  
ALLENDALE NATIONAL W168 (P)  
ALLENDALE CORA R22 (P)  
**SIRE - ALLENDALE SUPERSTAR B28 (AI) (ET) (S)**  
VENA PARK SHARKA (H)  
ALLENDALE DAWN T60 (AI) (P)  
ALLENDALE DAWN N159 (AI) (P)

KOANUI SUPREME (P)  
KOANUI SAFETY U130 (IMP NZL) (P)  
KOANUI CINDY P80 (P)  
**DAM - ALLENDALE FANCY A181 (AI) (P)**  
4K SURVIVOR (IMP USA) (S)  
ALLENDALE FANCY U42 (AI) (P)  
ALLENDALE FANCY P39 (P)

2013 SUMMER GROUP BREEDPLAN EBVS								\$ INDEX VALUE	
CE DIR	CE DTRS	GL	BWT	200W	400W	600W	MCW	SUP MKT	
-8.4	-1.8	+0.0	+6.5	+52	+82	+109	+114		+\$91
57%	45%	77%	90%	84%	84%	84%	73%	GRASS FED	+\$81
MILK	SS	CWT	EMA	RIB	RUMP	RBY%	IMF%	GRAIN FED	+\$81
+13	+3.1	+71	+2.5	-0.9	-1.3	+1.6	-0.5		
51%	81%	69%	57%	63%	68%	60%	66%	EU	+\$115

Yallaroi is an extremely long smooth skinned bull. Yallaroi sons have sold to \$16,000 at Dubbo and \$11,000 at last years sale. Yallaroi is a trait leader for 200,400 & 600 Day wt and scrotal size. Yallaroi is in the top 5% for Supermarket and EU indexes. He is the sire of six bulls in this years catalogue.



# Reference Sire

## REFERENCE SIRE - ALLENDALE ANZAC E114 (P)

E114

BIRTH DATE - 15/07/2009

ALLEDALE PRECISION V111 (P)  
ALLEDALE PUNTER 3 (AI) (P)  
ALLEDALE MARLINE R151 (P)  
**SIRE - ALLENDALE YACKA (AI) (P)**  
ALLEDALE NATIONAL W168 (P)  
ALLEDALE FLORRIE Z33 (AI) (P)  
ALLEDALE FLORRIE S176 (AI) (P)

ALLEDALE KING KONG 2 (S)  
ALLEDALE NATIONAL W168 (P)  
ALLEDALE CORA R22 (P)  
**DAM - ALLENDALE DAWN B22 (AI) (ET) (P)**  
VENA PARK SHARKA (H)  
ALLEDALE DAWN T60 (AI) (P)  
ALLEDALE DAWN N159 (AI) (P)

2013 SUMMER GROUP BREEDPLAN EBVS								\$ INDEX VALUE	
CE DIR	CE DTRS	GL	BWT	200W	400W	600W	MCW	SUP MKT	+\$121
-4.4	-0.1	+0.2	+7.4	+45	+78	+109	+93	GRASS FED	+\$120
65%	48%	88%	91%	87%	87%	84%	74%	GRAIN FED	+\$144
MILK	SS	CWT	EMA	RIB	RUMP	RBV%	IMF%	EU	+\$130
+12	+4.8	+71	+5.7	+1.9	+3.1	-0.1	+1.9		
48%	89%	72%	63%	67%	73%	65%	69%		

Anzac was sold at Dobbo for \$30,000 to Centennial and Injemira Studs. Anzac's dam B22 is a full sister to the Superstar bulls who have been used at studs such as Day's, Kerison Pines, Miniacowie and Ravensdale. B22 has three bulls in our Dubbo team this year, a son being retained in the stud, and dam of feature lot 21. Anzac is a trait leader for 200,400 & 600 Day wt and scrotal size. Anzac is in the top 1% for all 4 indexes. Anzac is the sire of four bulls in this years catalogue.



## ALLENDALE / DAYS WHITEFACE 2014

### Acc. DAYS WHITEFACE

#### Lot 1 - DAYS SHAMROCK H36 (AI) (ET) (P)

**H36**

**BIRTH DATE - 14/02/2012**

BOBANKEN PACIFIC P143 (AI) (P)  
 ALLENDALE KING KONG 2 (S)  
 ALLENDALE DAISY M7 (H)  
**SIRE - ALLENDALE NATIONAL W168 (P)**  
 ALLENDALE FEDERATION 3 (AI) (P)  
 ALLENDALE CORA R22 (P)  
 ALLENDALE CORA N100 (P)

BOWEN HEADLINE H39 (AI) (P)  
 ALLENDALE INVESTIGATOR 3 (P)  
 ST GABRIELS GLADIOLA 80 (AI) (H)  
**DAM - ALLENDALE HARMONY S37 (P)**  
 VALMA TORNADO (P)  
 ALLENDALE HARMONY P155 (AI) (P)  
 ALLENDALE HARMONY M55 (AI) (P)

2013 SUMMER GROUP BREEDPLAN EBVS								\$ INDEX VALUE	
CE DIR	CE DTRS	GL	BWT	200W	400W	600W	MCW	SUP MKT	+\$81
-2.2	+2.4	-1.7	+5.1	+37	+55	+75	+63	GRASS FED	+\$77
55%	52%	59%	75%	71%	71%	73%	67%	GRAIN FED	+\$82
MILK	SS	CWT	EMA	RIB	RUMP	RBV%	IMF%	EU	+\$93
+11	+1.5	+49	+3.3	+0.2	+0.5	+1.2	+0.0		
63%	77%	64%	58%	61%	64%	60%	59%		

A long deep bodied son of the renowned National who is now a trait leader for 8 traits. 4 ET sisters of H36 have been retained. 3 sons of S37 have been used in the herd selling to \$20,000 at Dubbo. In top 5% 200 day wt, top 10% gestation length and top 15% 400 day wt and carcass wt. Pigment 100/100.

PURCHASER:..... \$.....



## ALLEDALE / DAYS WHITEFACE 2014

### Acc. DAYS WHITEFACE

**Lot 2 - DAYS ROBIN HOOD H33 (AI) (ET) (P)**

**H33**

**BIRTH DATE - 13/02/2012**

ALLEDALE ROSEMOUNT 2 (AI) (P)  
ALLEDALE VAGABOND A74 (AI) (P)  
SUZELLE MARLINE U54 (AI) (ET) (P)  
**SIRE - ALLEDALE WATERHOUSE D1 (P)**  
ALLEDALE LANDLORD 3 (AI) (P)  
ALLEDALE MARLINE X185 (P)  
ALLEDALE MARLINE U46 (AI) (P)

ALLEDALE JAKOVICH (P)  
ALLEDALE KENWORTH 2 (P)  
ALLEDALE MARLINE N31 (AI) (ET) (P)  
**DAM - ALLEDALE FANCY U5 (AI) (P)**  
KESWICK MUSGROVE (AI) (S)  
ALLEDALE FANCY 248 (AI) (P)  
ALLEDALE FANCY 141 (P)

2013 SUMMER GROUP BREEDPLAN EBVS								\$ INDEX VALUE	
CE DIR	CE DTRS	GL	BWT	200W	400W	600W	MCW	SUP MKT	+\$96
<b>+0.9</b>	<b>+2.9</b>	<b>-2.6</b>	<b>+5.2</b>	<b>+39</b>	<b>+61</b>	<b>+89</b>	<b>+90</b>	GRASS FED	+\$88
53%	47%	64%	75%	72%	72%	73%	67%	GRAIN FED	+\$95
MILK	SS	CWT	EMA	RIB	RUMP	RBY%	IMF%	EU	+\$112
<b>+18</b>	<b>+1.4</b>	<b>+57</b>	<b>+4.7</b>	<b>-0.7</b>	<b>-0.6</b>	<b>+1.7</b>	<b>+0.0</b>		
59%	78%	65%	59%	61%	64%	58%	61%		

Deep, heavy smooth skinned bull. An ET brother to Robin Hood H38 who was Junior and Grand Champion at both Adelaide and Melbourne in 2013. U5 has 8 daughters in the herd and seven sons have been used in the herd. Progeny of U5 have sold to \$30,000 to gross over \$120,000. Top 5% for gestation length, 200, 400 and 600 day wt, carcase wt, EMA, supermarket, grassfed and EU indexes. Pigment 100/100.

PURCHASER:..... \$.....



## ALLEDALE / DAYS WHITEFACE 2014

### Acc. DAYS WHITEFACE

#### Lot 3 - DAYS DICTATOR H105 (P)

H105

BIRTH DATE - 12/05/2012

SOUTH BUKALONG WALKER 6 (AI) (P)  
SOUTH BUKALONG WALLACE 2 (P)  
SOUTH BUKALONG VICTORIA 152 (P)  
**SIRE - DAYS BEDFORD F14 (AI) (P)**  
WIRRUNA ABERCORN (AI) (P)  
ALLEDALE MARSHALL LASS D100 (AI) (P)  
ALLEDALE MARSHALL LASS Z20 (P)

ALLEDALE VAGABOND A74 (AI) (P)  
ALLEDALE WATERHOUSE D1 (P)  
ALLEDALE MARLINE X185 (P)  
**DAM - DAYS GLADIOLA F114 (AI) (P)**  
ALLEDALE LANDLORD 3 (AI) (P)  
ALLEDALE GLADIOLA X178 (P)  
ST GABRIELS GLADIOLA 80 (AI) (H)

2013 SUMMER GROUP BREEDPLAN EBVS								\$ INDEX VALUE	
CE DIR	CE DTRS	GL	BWT	200W	400W	600W	MCW	SUP MKT	+\$102
-3.1		-3.6	+6.6	+41	+60	+94	+81	GRASS FED	+\$98
37%		53%	71%	65%	66%	69%	60%	GRAIN FED	+\$111
MILK	SS	CWT	EMA	RIB	RUMP	RBV%	IMF%	EU	+\$116
+15	+2.9	+59	+5.2	+0.5	+0.9	+1.3	+0.6		
42%	75%	55%	48%	52%	56%	50%	49%		

Very long bull with a sires outlook. From a very good, well bred heifer. Sired by Bedford F14 who we used on heifers as a yearling and continue to use by AI. He sold at out 2012 sale for \$9,000 to Deeck Pastoral. A high performing bull with 200 day wt in top 1%. Top 5% for gestation length, 400 and 600 day wt, carcass wt, EMA and all indexes. Pigment 100/100.

PURCHASER:..... \$.....





## ALLEDALE / DAYS WHITEFACE 2014

### Acc. DAYS WHITEFACE

**Lot 4 - DAYS WHISKEY H68 (AI) (S)**

**H68**

**BIRTH DATE - 03/05/2012**

BOWEN VINCENT V1 (S)  
DEBARRY EDEN (P)  
DEBARRY PURITY V50 (AI) (ET) (P)  
**SIRE - ALLEDALE TIPPERARY D13 (AI) (ET) (P)**  
KROY PARK JUDGE J9 (P)  
ALLEDALE FANCY U64 (AI) (P)  
ALLEDALE FANCY S21 (AI) (P)

ALLEDALE KENWORTH 2 (P)  
ALLEDALE NARRATOR 3 (AI) (P)  
ALLEDALE FANCY R26 (P)  
**DAM - ALLEDALE DAWN X92 (HP)**  
KOANUI REBEL Q81 (IMP NZL) (P)  
ALLEDALE DAWN V54 (AI) (P)  
ALLEDALE DAWN T60 (AI) (P)

2013 SUMMER GROUP BREEDPLAN EBVS								\$ INDEX VALUE	
CE DIR	CE DTRS	GL	BWT	200W	400W	600W	MCW	SUP MKT	+\$82
-1.9	+0.1	+1.3	+5.3	+31	+54	+71	+58	GRASS FED	+\$81
43%	37%	71%	74%	68%	69%	72%	63%	GRAIN FED	+\$91
MILK	SS	CWT	EMA	RIB	RUMP	RBY%	IMF%	EU	+\$90
+15	+4.0	+42	+3.9	+1.2	+2.0	+0.3	+0.6		
51%	77%	58%	49%	54%	58%	51%	51%		

Long smooth skinned bull with balanced figures. Tipperary D13 sons have sold to \$18,000. H68 is in top 1% of the breed for scrotal size; top 10% for IMF, grass and grain fed indexes. Pigment 100/100.

PURCHASER:..... \$.....



**ALLEDALE / DAYS WHITEFACE 2014****Acc. DAYS WHITEFACE****Lot 5 - DAYS DELEGATE H59 (P)****H59****BIRTH DATE - 30/04/2012**

ALLEDALE KING KONG 2 (S)  
ALLEDALE NATIONAL W168 (P)  
ALLEDALE CORA R22 (P)  
**SIRE - ALLEDALE SUPERSTAR B26 (AI) (ET) (P)**  
VENA PARK SHARKA (H)  
ALLEDALE DAWN T60 (AI) (P)  
ALLEDALE DAWN N159 (AI) (P)

ALLEDALE SPOT ON (AI) (P)  
ALLEDALE UNRIVALLED (TW) (P)  
ALLEDALE GLADIOLA T169 (ET) (P)  
**DAM - ALLEDALE CORA B221 (P)**  
TA-BAR 30Z SPENCER 51C (IMP CAN) (P)  
ALLEDALE CORA T112 (AI) (P)  
ALLEDALE CORA K62 (P)

2013 SUMMER GROUP BREEDPLAN EBVS								\$ INDEX VALUE	
CE DIR	CE DTRS	GL	BWT	200W	400W	600W	MCW	SUP MKT	
-1.3	+1.1	+0.2	+5.4	+36	+55	+76	+86		+\$73
45%	40%	48%	74%	68%	69%	71%	63%	GRASS FED	+\$65
MILK	SS	CWT	EMA	RIB	RUMP	RBV%	IMF%	GRAIN FED	+\$68
+14	+0.4	+48	+2.2	+0.5	+1.0	+0.0	+0.2		
50%	77%	58%	51%	55%	59%	53%	53%	EU	+\$82

Quality, deep bodied easy doing son of the consistent Superstar B26. Top 10% for 200 day wt, top 15% for 400 day wt and carcass wt.  
Pigment 100/100.

PURCHASER:..... \$.....

**Acc. DAYS WHITEFACE****Lot 6 - DAYS BALMORAL H87 (P)****H87****BIRTH DATE - 07/05/2012**

ALLEDALE ROSEMOUNT 2 (AI) (P)  
ALLEDALE VAGABOND A74 (AI) (P)  
SUZELLE MARLINE U54 (AI) (ET) (P)  
**SIRE - ALLEDALE WATERHOUSE D1 (P)**  
ALLEDALE LANDLORD 3 (AI) (P)  
ALLEDALE MARLINE X185 (P)  
ALLEDALE MARLINE U46 (AI) (P)

KIDMAN COL JOY T96 (AI) (TW) (P)  
ALLEDALE ROBIN HOOD Y169 (P)  
ALLEDALE FANCY U5 (AI) (P)  
**DAM - ALLEDALE MARSHALL LASS C91 (AI) (P)**  
VALMA PRIDE (P)  
ALLEDALE MARSHALL LASS A14 (AI) (P)  
ALLEDALE MARSHALL LASS W32 (AI) (P)

2013 SUMMER GROUP BREEDPLAN EBVS								\$ INDEX VALUE	
CE DIR	CE DTRS	GL	BWT	200W	400W	600W	MCW	SUP MKT	
-0.1	+2.3	-0.7	+4.9	+39	+60	+84	+76		+\$93
45%	38%	61%	74%	69%	70%	73%	65%	GRASS FED	+\$87
MILK	SS	CWT	EMA	RIB	RUMP	RBV%	IMF%	GRAIN FED	+\$97
+15	+2.6	+55	+4.8	-0.3	-0.3	+1.2	+0.3		
51%	77%	62%	55%	58%	61%	54%	57%	EU	+\$106

Sirey headed, long, deep, smooth skinned Waterhouse son. Top 5% for 200 and 400 day wt, carcass wt, EMA, supermarket and EU indexes.  
Top 10% for 600 day wt, grassfed and grainfed indexes. Pigment 100/100.

PURCHASER:..... \$.....

## ALLENDALE / DAYS WHITEFACE 2014

### Acc. DAYS WHITEFACE

**Lot 7 - DAYS DRIFTER H9 (TW) (P)**

**H9**

**BIRTH DATE - 27/01/2012**

ALLENDALE ROSEMOUNT 2 (AI) (P)  
 ALLENDALE VAGABOND A74 (AI) (P)  
 SUZELLE MARLINE U54 (AI) (ET) (P)  
**SIRE - ALLENDALE WATERHOUSE D1 (P)**  
 ALLENDALE LANDLORD 3 (AI) (P)  
 ALLENDALE MARLINE X185 (P)  
 ALLENDALE MARLINE U46 (AI) (P)

LLL TIMBER 65H (IMP USA) (P)  
 PINE HILL FLOW Z582 (AI) (P)  
 PINE HILL PURITY U123 (AI) (P)  
**DAM - PINE HILL MARITANA B513 (P)**  
 ELITE J7C X54 (AI) (P)  
 PINE HILL MARITANA Z604 (AI) (P)  
 PINE HILL MARITANA V111 (AI) (P)

2013 SUMMER GROUP BREEDPLAN EBVS							
CE DIR	CE DTRS	GL	BWT	200W	400W	600W	MCW
-0.9	+3.5	-0.8	+5.0	+41	+61	+89	+88
43%	36%	55%	68%	64%	63%	63%	55%
MILK	SS	CWT	EMA	RIB	RUMP	RBV%	IMF%
+13	+1.8	+59	+4.8	+0.0	-0.1	+0.9	+0.5
51%	69%	54%	46%	48%	50%	44%	49%

\$ INDEX VALUE	
SUP MKT	+\$94
GRASS FED	+\$88
GRAIN FED	+\$98
EU	+\$107

Thick ,deep soft bull used on cows in 2013. His dam was purchased at Pine Hill dispersal. Top 1% 200 day wt. Top 5% 400 and 600 day wt, carcase wt, EMA and all indexes. Pigment 100/100.

PURCHASER:..... \$.....



## ALLENDALE / DAYS WHITEFACE 2014

### Acc. ALLENDALE

#### Lot 8 - ALLENDALE COWBOY H23 (AI) (P)

**H23**

**BIRTH DATE - 17/04/2012**

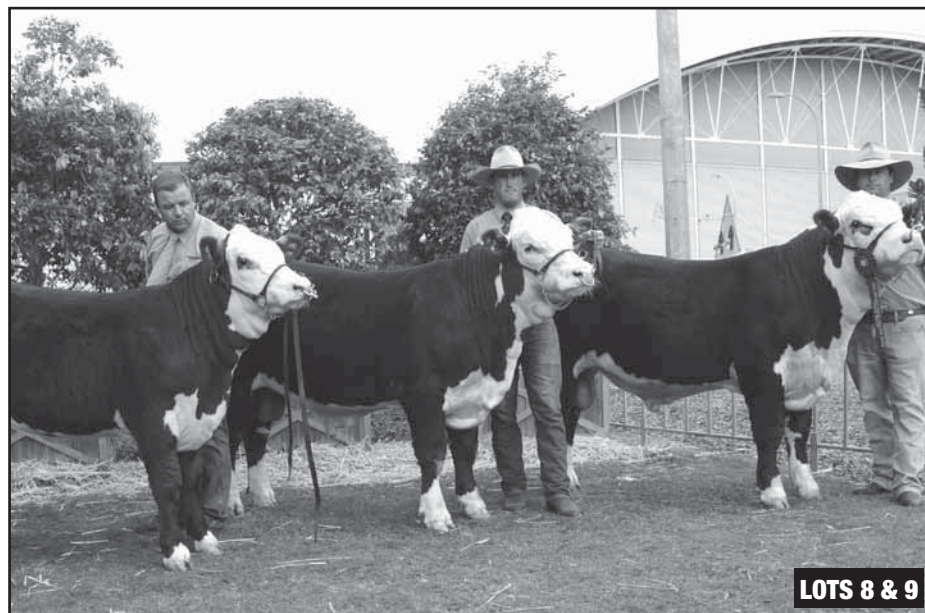
KAIRURU ABERDEEN 03 0047 (IMP NZL) (P)  
 HARVIE TRAVELER 69T (IMP CAN) (P)  
 HARVIE PEARL 129P (P)  
**SIRE - HARVIE TAILOR MADE ET 7W (IMP CAN) (AI) (P)**  
 HARVIE DEYNOTE 61D (P)  
 HARVIE MISS FIREFLY 51F (IMP CAN) (P)  
 HARVIE MISS NYLON 1Y (P)

DEBARRY EDEN (P)  
 ALLENDALE ROBIN HOOD C30 (AI) (ET) (P)  
 ALLENDALE FANCY U5 (AI) (P)  
**DAM - ALLENDALE CORA E52 (P)**  
 OKAWA COMMODORE 020076 (IMP NZL) (P)  
 ALLENDALE CORA C14 (AI) (P)  
 MOORLANDS CORA W063 (H)

2013 SUMMER GROUP BREEDPLAN EBVS								\$ INDEX VALUE	
CE DIR	CE DTRS	GL	BWT	200W	400W	600W	MCW	SUP MKT	+\$98
		-0.7	+5.8	+41	+69	+93	+89	GRASS FED	+\$88
		71%	61%	62%	61%	58%	50%	GRAIN FED	+\$91
MILK	SS	CWT	EMA	RIB	RUMP	RBY%	IMF%	EU	+\$116
+21	+2.1		+3.6	-0.5	-1.1	+1.6	-0.6		
46%	69%		42%	45%	48%	42%	43%		

A very powerful sire with plenty of length and muscle. 1st in the Sires Progeny group at Sydney Royal 2013. Used on stud cows 2013. Top 1% 200 & 400 Day wt. Top 5% 600 Day wt & Milk, supermarket, Grassfed, EU Indexes. Top 10% Grainfed Index. Top 15% Scrotal Size. Top 20% EMA. Pigment 100/100.

PURCHASER:..... \$.....





## ALLEDALE / DAYS WHITEFACE 2014

### Acc. ALLEDALE

#### Lot 9 - ALLEDALE AMBUSH H19 (AI) (P)

H19

BIRTH DATE - 16/04/2012

KAIRURU ABERDEEN 03 0047 (IMP NZL) (P)  
HARVIE TRAVELER 69T (IMP CAN) (P)  
HARVIE PEARL 129P (P)  
**SIRE - HARVIE TAILOR MADE ET 7W (IMP CAN) (AI) (P)**  
HARVIE DEYNOTE 61D (P)  
HARVIE MISS FIREFLY 51F (IMP CAN) (P)  
HARVIE MISS NYLON 1Y (P)

BOWEN VINCENT V1 (S)  
DEBARRY EDEN (P)  
DEBARRY PURITY V50 (AI) (ET) (P)  
**DAM - ALLEDALE MARLINE C23 (AI) (ET) (P)**  
SEVENBARDOT VANGUARD N50 (P)  
ALLEDALE MARLINE R151 (P)  
ALLEDALE MARLINE J134 (P)

2013 SUMMER GROUP BREEDPLAN EBVS								\$ INDEX VALUE	
CE DIR	CE DTRS	GL	BWT	200W	400W	600W	MCW	SUP MKT	
-0.8		+0.0	+6.2	+37	+51	+74	+66		+\$75
36%		71%	70%	65%	64%	63%	54%	GRASS FED	+\$68
MILK	SS	CWT	EMA	RIB	RUMP	RBV%	IMF%	GRAIN FED	+\$68
+17	+2.2	+43	+2.5	+0.6	+0.7	+0.4	-0.5	EU	+\$87
50%	71%	52%	45%	49%	52%	45%	46%		

A long, smooth, good headed bull used lightly in the stud in 2013. 1st in the Sires Progeny Group at Sydney Royal Show 2013. Top 5% 200 Day wt. Top 15% Milk, Scrotal Size. Pigment 100/100.

PURCHASER:..... \$.....

### Acc. ALLEDALE

#### Lot 10 - ALLEDALE BURANDO H11 (AI) (P)

H11

BIRTH DATE - 12/04/2012

ALLEDALE NATIONAL W168 (P)  
ALLEDALE SUPERSTAR B28 (AI) (ET) (S)  
ALLEDALE DAWN T60 (AI) (P)  
**SIRE - ALLEDALE YALLAROI 2 (AI) (TW) (P)**  
KOANUI SAFETY U130 (IMP NZL) (P)  
ALLEDALE FANCY A181 (AI) (P)  
ALLEDALE FANCY U42 (AI) (P)

ALLEDALE KENWORTH 2 (P)  
ALLEDALE OCTAGONAL (AI) (P)  
ALLEDALE MARLINE R71 (P)  
**DAM - BURANDO OCT BLISSFUL 82 (P)**  
VALMA PRIDE (P)  
BURANDO PRIDES BLISSFUL 53 R50 (HPR) (P)  
BURANDO BLISSFUL 31 L41 (AI) (P)

2013 SUMMER GROUP BREEDPLAN EBVS								\$ INDEX VALUE	
CE DIR	CE DTRS	GL	BWT	200W	400W	600W	MCW	SUP MKT	
-5.4		-2.8	+6.2	+39	+59	+79	+81		+\$66
40%		71%	71%	66%	64%	63%	55%	GRASS FED	+\$56
MILK	SS	CWT	EMA	RIB	RUMP	RBV%	IMF%	GRAIN FED	+\$58
+13	+1.4	+46	+2.4	-0.6	-0.9	+1.5	-0.5	EU	+\$80
44%	72%	52%	45%	48%	52%	46%	47%		

A long, heavy bull shown at Sydney Royal 2013. Top 5% 200 Day wt. Top 10% 400 Day wt. Top 15% 600 Day wt. Pigment 100/100

PURCHASER:..... \$.....

## ALLENDALE / DAYS WHITEFACE 2014

### Acc. ALLENDALE

#### Lot 11 - ALLENDALE CRACKER H84 (P)

H84

BIRTH DATE - 17/05/2012

ALLENDALE NATIONAL W168 (P)  
ALLENDALE SUPERSTAR B28 (AI) (ET) (S)  
ALLENDALE DAWN T60 (AI) (P)  
**SIRE - ALLENDALE YALLAROI 2 (AI) (TW) (P)**  
KOANUI SAFETY U130 (IMP NZL) (P)  
ALLENDALE FANCY A181 (AI) (P)  
ALLENDALE FANCY U42 (AI) (P)

ALLENDALE SPOT ON (AI) (P)  
ALLENDALE UNRIVALLED (TW) (P)  
ALLENDALE GLADIOLA T169 (ET) (P)  
**DAM - ALLENDALE DAWN B110 (P)**  
ALLENDALE PENTAGON V207 (P)  
ALLENDALE DAWN Y99 (AI) (P)  
ALLENDALE DAWN T60 (AI) (P)

2013 SUMMER GROUP BREEDPLAN EBVS								\$ INDEX VALUE	
CE DIR	CE DTRS	GL	BWT	200W	400W	600W	MCW	SUP MKT	+\$81
-9.5		-0.1	+7.6	+46	+70	+94	+96	GRASS FED	+\$74
40%		53%	74%	68%	68%	71%	62%	GRAIN FED	+\$82
MILK	SS	CWT	EMA	RIB	RUMP	RBV%	IMF%	EU	+\$96
+15	+3.6	+56	+3.2	+0.2	+0.5	+0.9	+0.3		
44%	76%	57%	47%	52%	57%	50%	50%		

A big, strong, deep bodied bull. A full brother sold to George and Pat Gum for \$11,000 at last years sale. Top 1% 200 Day wt, 400 Day wt, Scrotal Size. Top 5% 600 Day wt. Top 15% Supermarket and EU Indexes. Top 20% IMF, Grainfed indexes. Pigment 100/100.

PURCHASER:..... \$.....



## ALLENDALE / DAYS WHITEFACE 2014

### Acc. ALLENDALE

**Lot 12 - ALLENDALE ZEALOT H60 (AI) (P)**

**H60**

**BIRTH DATE - 28/04/2012**

ALLENDALE PUNTER 3 (AI) (P)  
ALLENDALE YACKA (AI) (P)  
ALLENDALE FLORRIE Z33 (AI) (P)  
**SIRE - ALLENDALE ANZAC E114 (P)**

ALLENDALE NATIONAL W168 (P)  
ALLENDALE DAWN B22 (AI) (ET) (P)  
ALLENDALE DAWN T60 (AI) (P)

DAVIS 28U FAIRPLAY 610F (IMP CAN) (ET) (P)  
ALLENDALE LANDLORD 3 (AI) (P)  
ALLENDALE LYDIA N23 (AI) (P)  
**DAM - ALLENDALE FANCY Y19 (AI) (P)**

ALLENDALE LIQUIDATOR (S)  
ALLENDALE FANCY U84 (AI) (P)  
ALLENDALE FANCY N105 (AI) (P)

2013 SUMMER GROUP BREEDPLAN EBVS								\$ INDEX VALUE	
CE DIR	CE DTRS	GL	BWT	200W	400W	600W	MCW	SUP MKT	+\$96
-6.2		+0.0	+8.4	+42	+67	+102	+98	GRASS FED	+\$89
43%		75%	74%	69%	69%	71%	63%	GRAIN FED	+\$97
MILK	SS	CWT	EMA	RIB	RUMP	RBV%	IMF%	EU	+\$109
+15	+2.5	+60	+4.3	+1.3	+2.1	+0.2	+0.4		
46%	77%	58%	49%	54%	58%	51%	51%		

A long well muscled bull. Dam Y19 is a very consistent breeding female. Top 1% 200, 400, 600 Day wt. Top 5% Rib & Rump Fat, Supermarket, Grassfed, EU indexes. Top 10% Scrotal Size, EMA, Grainfed Index. Pigment 100/100.

PURCHASER:..... \$.....



**LOT 12**

## ALLEDALE / DAYS WHITEFACE 2014

### Acc. ALLEDALE

**Lot 13 - ALLEDALE COOLABAH H24 (AI) (S)**

**H24**

**BIRTH DATE - 17/04/2012**

INVERARY 298 STORM R811 (H)  
LLANGLOTHAN STORM U964 (H)  
LLANGLOTHAN THANKFUL 13 (H)  
**SIRE - GLENDAN PARK STORM W134 (H)**  
ZUM PARK CLADON (TW) (H)  
ZUM PARK ATHENA (H)  
ZUM PARK MINERVA 3 (AI) (ET) (H)

OKAWA COMMODORE 020076 (IMP NZL) (P)  
ALLEDALE WASHINGTON C77 (AI) (P)  
ALLEDALE FANCY Z59 (P)  
**DAM - ABBERLEY KATE E3 (P)**  
DAVIS 80U FACSIMILE 14X (IMP CAN) (P)  
ABBERLEY KATE (AI) (P)  
ABBERLEY CORA Q1 (P)

2013 SUMMER GROUP BREEDPLAN EBVS							
CE DIR	CE DTRS	GL	BWT	200W	400W	600W	MCW
-1.5	-0.8	-0.1	+4.5	+30	+60	+88	+99
46%	40%	72%	73%	69%	70%	72%	65%
MILK	SS	CWT	EMA	RIB	RUMP	RBV%	IMF%
+14	+1.6	+51	+2.6	-0.1	+0.0	+0.7	+0.3
56%	77%	61%	53%	57%	61%	55%	56%

\$ INDEX VALUE	
SUP MKT	+\$84
GRASS FED	+\$76
GRAIN FED	+\$83
EU	+\$96

Upstanding, long bull by popular sire Storm. Top 5% 400 & 600 Day wt. Top 15% Supermarket, EU Indexes. Top 20% IMF, Grassfed, Grainfed Indexes. Pigment 100/100.

PURCHASER:..... \$.....



**ALLENDALE / DAYS WHITEFACE 2014****Acc. ALLENDALE****Lot 14 - ALLENDALE ANGASTON H63 (AI) (S)****H63****BIRTH DATE - 29/04/2012**

INVERARY 298 STORM R811 (H)  
 LLANGLOTHAN STORM U964 (H)  
 LLANGLOTHAN THANKFUL 13 (H)  
**SIRE - GLENDAN PARK STORM W134 (H)**  
 ZUM PARK CLADON (TW) (H)  
 ZUM PARK ATHENA (H)  
 ZUM PARK MINERVA 3 (AI) (ET) (H)

ALLENDALE PRECISION V111 (P)  
 ALLENDALE PUNTER 3 (AI) (P)  
 ALLENDALE MARLINE R151 (P)  
**DAM - ALLENDALE LAST DAY A254 (P)**  
 DAVIS 80U FACSIMILE 14X (IMP CAN) (P)  
 ALLENDALE LAST DAY T43 (AI) (P)  
 ALLENDALE LAST DAY L133 (AI) (P)

2013 SUMMER GROUP BREEDPLAN EBVS								\$ INDEX VALUE	
CE DIR	CE DTRS	GL	BWT	200W	400W	600W	MCW	SUP MKT	+\$87
<b>-4.8</b>	<b>-2.4</b>	<b>+3.1</b>	<b>+6.1</b>	<b>+33</b>	<b>+64</b>	<b>+101</b>	<b>+106</b>	GRASS FED	+\$76
46%	39%	74%	74%	69%	70%	72%	66%	GRAIN FED	+\$85
MILK	SS	CWT	EMA	RIB	RUMP	RBV%	IMF%	EU	+\$98
<b>+10</b>	<b>+2.4</b>	<b>+55</b>	<b>+2.7</b>	<b>+0.0</b>	<b>+0.1</b>	<b>+0.7</b>	<b>+0.3</b>		
58%	77%	61%	53%	57%	61%	55%	56%		

A big, long bull with an excellent hindquarter sired by the popular Glendan Park Storm. Dam A 254 is a very consistent breeder selling bulls to \$7500 to G & P Gum and a Dubbo bull last year to Ellingerrin. Top 1% 600 Day wt. Top 5% 400 Day wt. Top 10% Scrotal Size. Top 20% 200 Day, IMF. Pigment 100/100.

PURCHASER:..... \$.....

**Acc. ALLENDALE****Lot 15 - ALLENDALE DYNAMITE H41 (P)****H41****BIRTH DATE - 21/04/2012**

KOANUI ROCKET Q334 (P)  
 KOANUI ROCKET O219 (IMP NZL) (P)  
 KOANUI ANGEL R187 (P)  
**SIRE - MORGANVALE FEVOLA (AI) (P)**  
 HEATHERDALE OPTION X155 (P)  
 MORGANVALE STATUESQUE C215 (P)  
 HEATHERDALE STATUESQUE W222 (P)

MOUNT DIFFICULT FELLIS Y12 (AI) (P)  
 WIRRUNA ABERCORN (AI) (P)  
 WIRRUNA GOLDEN VANITY R94 (AI) (P)  
**DAM - ALLENDALE FANCY F9 (AI) (ET) (P)**  
 KROY PARK JUDGE J9 (P)  
 ALLENDALE FANCY U64 (AI) (P)  
 ALLENDALE FANCY S21 (AI) (P)

2013 SUMMER GROUP BREEDPLAN EBVS								\$ INDEX VALUE	
CE DIR	CE DTRS	GL	BWT	200W	400W	600W	MCW	SUP MKT	+\$95
<b>+2.3</b>	<b>+2.5</b>	<b>-0.1</b>	<b>+3.7</b>	<b>+32</b>	<b>+57</b>	<b>+82</b>	<b>+80</b>	GRASS FED	+\$89
41%	36%	48%	70%	65%	65%	68%	59%	GRAIN FED	+\$86
MILK	SS	CWT	EMA	RIB	RUMP	RBV%	IMF%	EU	+\$115
<b>+17</b>	<b>+2.4</b>	<b>+57</b>	<b>+4.8</b>	<b>+0.0</b>	<b>+0.3</b>	<b>+2.0</b>	<b>-0.8</b>		
43%	75%	55%	47%	50%	54%	48%	47%		

A tall, good skinned heifers first calf. Granddam U64 dam of the Tipperary bulls. Top 5% EMA, Supermarket, Grassfed, EU Indexes. Top 10% 400, 600 Day wt, Scrotal Size. Top 15% Milk, Grainfed Index. Top 20% 200 Day wt. Pigment 100/100.

PURCHASER:..... \$.....

## ALLENDALE / DAYS WHITEFACE 2014

### Acc. ALLENDALE

**Lot 16 - ALLENDALE DOUGAL H7 (AI) (P)**

**H7**

**BIRTH DATE - 12/04/2012**

ALLENDALE NATIONAL W168 (P)  
 ALLENDALE SUPERSTAR B28 (AI) (ET) (S)  
 ALLENDALE DAWN T60 (AI) (P)  
**SIRE - ALLENDALE YALLAROI 2 (AI) (TW) (P)**  
 KOANUI SAFETY U130 (IMP NZL) (P)  
 ALLENDALE FANCY A181 (AI) (P)  
 ALLENDALE FANCY U42 (AI) (P)

VALMA PRIDE (P)  
 BURANDO PERTH 71 M80 (TW) (P)  
 BURANDO DELUSION 61 (AI) (P)  
**DAM - ALLENDALE DIANA E35 (AI) (P)**  
 MORGANVALE YALUMBA (P)  
 ALLENDALE DIANA B53 (P)  
 WIRANYA DIANA X137 (P)

2013 SUMMER GROUP BREEDPLAN EBVS								\$ INDEX VALUE	
CE DIR	CE DTRS	GL	BWT	200W	400W	600W	MCW	SUP MKT	+\$85
-1.8		-1.2	+5.5	+40	+67	+91	+99	GRASS FED	+\$78
36%		71%	72%	66%	67%	70%	60%	GRAIN FED	+\$79
MILK	SS	CWT	EMA	RIB	RUMP	RBV%	IMF%	EU	+\$110
+7	+3.3	+57	+2.7	-1.2	-1.9	+1.9	-0.7		
39%	75%	55%	46%	50%	55%	48%	48%		

A big, long, smooth skinned bull. Top 1% 400 Day wt, Scrotal Size. Top 5% 200 Day wt, 600 Day wt, EU index. Top 10% Supermarket index. Top 15% Grassfed index. Pigment 100/100.

PURCHASER:..... \$.....





**ALLENDALE / DAYS WHITEFACE 2014****Acc. DAYS WHITEFACE****Lot 17 - DAYS BANDIT H179 (P)****H179****BIRTH DATE - 18/07/2012**

ALLENDALE KING KONG 2 (S)  
ALLENDALE NATIONAL W168 (P)  
ALLENDALE CORA R22 (P)  
**SIRE - ALLENDALE SUPERSTAR B26 (AI) (ET) (P)**  
VENA PARK SHARKA (H)  
ALLENDALE DAWN T60 (AI) (P)  
ALLENDALE DAWN N159 (AI) (P)

ALLENDALE ROSEMOUNT 2 (AI) (P)  
ALLENDALE VAGABOND A74 (AI) (P)  
SUZELLE MARLINE U54 (AI) (ET) (P)  
**DAM - ALLENDALE MARLINE D222 (AI) (P)**  
ALLENDALE FEDERATION 3 (AI) (P)  
ALLENDALE MARLINE T74 (HP)  
ALLENDALE MARLINE Q37 (P)

2013 SUMMER GROUP BREEDPLAN EBVS								\$ INDEX VALUE	
CE DIR	CE DTRS	GL	BWT	200W	400W	600W	MCW	SUP MKT	+\$88
-4.0	-0.6	+0.4	+6.2	+37	+60	+84	+78	GRASS FED	+\$83
46%	41%	51%	73%	68%	68%	67%	61%	GRAIN FED	+\$97
MILK	SS	CWT	EMA	RIB	RUMP	RBV%	IMF%	EU	+\$93
+16	+1.7	+52	+4.7	+1.2	+2.0	+0.3	+1.1		
51%	78%	57%	52%	56%	60%	54%	54%		

Big deep smooth bull with a great carcass. Top 5% 200 and 400 day wt, EMA and IMF. Top 10% 600 day wt, carcass wt, supermarket, grassfed and grainfed indexes. Pigment 100/100.

PURCHASER:..... \$.....



## ALLENDALE / DAYS WHITEFACE 2014

### Acc. DAYS WHITEFACE

**Lot 18 - DAYS DAREDEVIL H145 (P)**

**H145**

**BIRTH DATE - 02/06/2012**

SOUTH BUKALONG WALKER 6 (AI) (P)  
SOUTH BUKALONG WALLACE 2 (P)  
SOUTH BUKALONG VICTORIA 152 (P)

**SIRE - DAYS BEDFORD F14 (AI) (P)**

WIRRUNA ABERCORN (AI) (P)  
ALLENDALE MARSHALL LASS D100 (AI) (P)  
ALLENDALE MARSHALL LASS Z20 (P)

ALLENDALE NATIONAL W168 (P)  
ALLENDALE SUPERSTAR B28 (AI) (ET) (S)  
ALLENDALE DAWN T60 (AI) (P)

**DAM - DAYS FANCY F6 (AI) (ET) (P)**

ALLENDALE OVERTON (P)  
ALLENDALE FANCY Z59 (P)  
ALLENDALE FANCY V35 (P)

2013 SUMMER GROUP BREEDPLAN EBVS								\$ INDEX VALUE	
CE DIR	CE DTRS	GL	BWT	200W	400W	600W	MCW	SUP MKT	+\$97
-0.7		-1.9	+4.4	+34	+52	+75	+61	GRASS FED	+\$100
38%		48%	70%	64%	64%	63%	56%	GRAIN FED	+\$118
MILK	SS	CWT	EMA	RIB	RUMP	RBV%	IMF%	EU	+\$102
+13	+2.7	+52	+4.8	+2.0	+3.1	-0.2	+1.7		
41%	75%	52%	47%	51%	55%	49%	49%		

Deep bodied, good headed smooth skinned heifers first calf. She is a full sister to Washington H35 - in our 2014 Wodonga team and half sister to C77 selling for \$30,000 at Dubbo, and D57 Grand Champion selling for \$15,000 at Dubbo. Top 1% IMF and grainfed index. Top 5% EMA, supermarket and grassfed indexes. Top 10% scrotal size, carcase wt and EU index. Pigment 100/100.

PURCHASER:..... \$.....





## ALLENDALE / DAYS WHITEFACE 2014

### Acc. DAYS WHITEFACE

**Lot 19 - DAYS ASTEROID H206 (P)**

**H206**

**BIRTH DATE - 15/08/2012**

ALLENDALE VAGABOND A74 (AI) (P)  
 ALLENDALE WATERHOUSE D1 (P)  
 ALLENDALE MARLINE X185 (P)  
**SIRE - DAYS WIZARD F5 (AI) (ET) (S)**  
 ALLENDALE NATIONAL W168 (P)  
 ALLENDALE DAWN Z21 (AI) (P)  
 ALLENDALE DAWN V54 (AI) (P)

ALLENDALE KING KONG 2 (S)  
 ALLENDALE NATIONAL W168 (P)  
 ALLENDALE CORA R22 (P)  
**DAM - ALLENDALE FANCY C160 (AI) (P)**  
 ALLENDALE OPINION (S)  
 ALLENDALE FANCY Y104 (AI) (P)  
 ALLENDALE FANCY R136 (P)

2013 SUMMER GROUP BREEDPLAN EBVS								\$ INDEX VALUE	
CE DIR	CE DTRS	GL	BWT	200W	400W	600W	MCW	SUP MKT	+\$88
<b>-1.4</b>	<b>+1.9</b>	<b>-0.3</b>	<b>+5.3</b>	<b>+42</b>	<b>+66</b>	<b>+89</b>	<b>+100</b>	GRASS FED	+\$80
42%	37%	57%	73%	68%	67%	65%	58%	GRAIN FED	+\$90
MILK	SS	CWT	EMA	RIB	RUMP	RBV%	IMF%	EU	+\$101
<b>+15</b>	<b>+1.9</b>	<b>+60</b>	<b>+3.6</b>	<b>-0.6</b>	<b>-0.6</b>	<b>+0.8</b>	<b>+0.5</b>		
46%	76%	55%	49%	53%	57%	51%	51%		

Long, smooth bodied bull with an exceptionally long hindquarter. By Wizard, the 2012 Wodonga Grand Champion selling for \$20,000 to Yavenvale and Newcomen Herefords. First son of C160 sold for \$7,000. Top 1% 200 day wt. Top 5% 400 and 600 day wt and carcase wt. Top 10% IMF, supermarket, grainfed and EU indexes. Pigment 100/100.

PURCHASER:..... \$.....



## ALLEDALE / DAYS WHITEFACE 2014

### Acc. DAYS WHITEFACE

**Lot 20 - DAYS H422 (HPR) (P)**

**H422**

**BIRTH DATE - 04/07/2012**

ALLEDALE KING KONG 2 (S)  
ALLEDALE NATIONAL W168 (P)  
ALLEDALE CORA R22 (P)  
**SIRE - ALLEDALE SUPERSTAR B26 (AI) (ET) (P)**  
VENA PARK SHARKA (H)  
ALLEDALE DAWN T60 (AI) (P)  
ALLEDALE DAWN N159 (AI) (P)

JAMENA VENUEW (P)  
JAMENA EX VIEW (P)  
STUDBROOK AUDREY T025 (AI) (P)  
**DAM - ALLEDALE B414 (HPR) (P)**  
KIDMAN COL JOY T96 (AI) (TW) (P)  
ALLEDALE FANCY W61 (HPR) (P)  
ALLEDALE FANCY Q12 (P)

2013 SUMMER GROUP BREEDPLAN EBVS							
CE DIR	CE DTRS	GL	BWT	200W	400W	600W	MCW
<b>+0.4</b>	<b>+0.9</b>	<b>+0.2</b>	<b>+4.1</b>	<b>+31</b>	<b>+56</b>	<b>+72</b>	<b>+62</b>
42%	37%	39%	71%	66%	67%	65%	59%
MILK	SS	CWT	EMA	RIB	RUMP	RBV%	IMF%
<b>+11</b>	<b>+2.4</b>	<b>+46</b>	<b>+3.3</b>	<b>+1.5</b>	<b>+2.2</b>	<b>-0.8</b>	<b>+1.5</b>
50%	76%	55%	48%	52%	56%	50%	50%

\$ INDEX VALUE	
SUP MKT	+\$87
GRASS FED	+\$88
GRAIN FED	+\$105
EU	+\$91

Deep, thick, easy doing bull in the top 1% of the breed for IMF. Top 5% for grassfed and grainfed indexes. Top 10% for 400 day wt, scrotal size and supermarket index. Pigment 100/100.

PURCHASER:..... \$.....



## ALLENDALE / DAYS WHITEFACE 2014

### Acc. ALLENDALE

#### Lot 21 - ALLENDALE ANZAC H175 (ET) (P)

**H175**

**BIRTH DATE - 29/07/2012**

HARVIE LADIES MAN 4L (IMP CAN) (P)  
 EBBX CALGARY (AI) (ET) (P)  
 PALLABAH IRISH ROSE Q102 (P)  
**SIRE - DEBARRY CALGARY C58 (P)**  
 ALLENDALE OCTAGONAL (AI) (P)  
 DEBARRY DALLAS X75 (AI) (P)  
 DEBARRY DALLAS S61 (AI) (P)

ALLENDAL KING KONG 2 (S)  
 ALLENDALE NATIONAL W168 (P)  
 ALLENDALE CORA R22 (P)  
**DAM - ALLENDALE DAWN B22 (AI) (ET) (P)**  
 VENA PARK SHARKA (H)  
 ALLENDALE DAWN T60 (AI) (P)  
 ALLENDALE DAWN N159 (AI) (P)

2013 SUMMER GROUP BREEDPLAN EBVS								\$ INDEX VALUE	
CE DIR	CE DTRS	GL	BWT	200W	400W	600W	MCW	SUP MKT	+\$91
-3.3	+0.5	-0.3	+4.5	+34	+60	+82	+77	GRASS FED	+\$89
44%	39%	47%	71%	66%	66%	65%	59%	GRAIN FED	+\$112
MILK	SS	CWT	EMA	RIB	RUMP	RBV%	IMF%	EU	+\$94
+12	+2.3	+54	+4.5	+0.9	+1.1	+0.2	+1.9		
50%	75%	55%	50%	53%	57%	52%	52%		

An outstanding bull. 2 ET full brothers and an ET half brother (by Tailor Made) are reserved for Dubbo. Another ET half brother is being retained, and another is Lot 22 in this catalogue. B22 Dam of Anzac E114 who sold for \$30,000 at Dubbo, and is the sire of 4 very good bulls in this catalogue. Top 1% IMF. Top 5% 400 Day wt, Supermarket, Grassfed, Grainfed Indexes. Top 10% 600 Day wt, Scrotal Size, EMA. Top 15% 200 Day wt, EU Index. Pigment 100/100.

PURCHASER:..... \$.....



## ALLENDALE / DAYS WHITEFACE 2014

### Acc. ALLENDALE

**Lot 22 - ALLENDALE ANZAC H181 (ET) (P)**

**H181**

**BIRTH DATE - 30/07/2012**

KAIRURU ABERDEEN 03 0047 (IMP NZL) (P)  
 HARVIE TRAVELER 69T (IMP CAN) (P)  
 HARVIE PEARL 129P (P)  
**SIRE - HARVIE TAILOR MADE ET 7W (IMP CAN) (AI) (P)**  
 HARVIE DEYNOTE 61D (P)  
 HARVIE MISS FIREFLY 51F (IMP CAN) (P)  
 HARVIE MISS NYLON 1Y (P)

ALLENDALE KING KONG 2 (S)  
 ALLENDALE NATIONAL W168 (P)  
 ALLENDALE CORA R22 (P)  
**DAM - ALLENDALE DAWN B22 (AI) (ET) (P)**  
 VENA PARK SHARKA (H)  
 ALLENDALE DAWN T60 (AI) (P)  
 ALLENDALE DAWN N159 (AI) (P)

2013 SUMMER GROUP BREEDPLAN EBVS								\$ INDEX VALUE	
CE DIR	CE DTRS	GL	BWT	200W	400W	600W	MCW	SUP MKT	+\$84
-1.1		-0.2	+4.6	+36	+60	+77	+77	GRASS FED	+\$80
40%		53%	71%	66%	66%	64%	57%	GRAIN FED	+\$87
MILK	SS	CWT	EMA	RIB	RUMP	RBV%	IMF%	EU	+\$96
+15	+2.0	+54	+4.4	+0.7	+0.8	+0.7	+0.4		
51%	74%	54%	48%	52%	55%	48%	49%		

A deep, soft, attractive bull. An ET full brother for Dubbo and one to be retained in stud. 2 ET 1/2 brothers for Dubbo and also lot 21. B22 dam of the very good breeding bull Anzac H114 who sold for \$30,000 at Dubbo. Top 5% 400 Day wt. Top 10% 200 Day wt, EMA. Top 15% IMF, Supermarket, Grassfed, Grainfed, EU Indexes. Top 20% 600 Day wt, Scrotal Size, Rib & Rump. Pigment 100/100.

PURCHASER:..... \$.....



**LOT 22**

**ALLENDALE / DAYS WHITEFACE 2014****Acc. ALLENDALE****Lot 23 - ALLENDALE YEMEN H196 (S)****H196****BIRTH DATE - 22/08/2012**

ALLENDALE NATIONAL W168 (P)  
ALLENDALE SUPERSTAR B28 (AI) (ET) (S)  
ALLENDALE DAWN T60 (AI) (P)  
**SIRE - ALLENDALE YALLAROI 2 (AI) (TW) (P)**  
KOANUI SAFETY U130 (IMP NZL) (P)  
ALLENDALE FANCY A181 (AI) (P)  
ALLENDALE FANCY U42 (AI) (P)

BRAXTON DYNASTY K243 (IMP NZL) (ET) (P)  
BRAXTON WESTWIND 120M (IMP NZL) (P)  
BRAXTON GIRLIE J118 (P)  
**DAM - ALLENDALE FANCY A158 (AI) (ET) (S)**  
RED HILL TIME BOMB (AI) (ET) (H)  
ALLENDALE FANCY V190 (AI) (P)  
ALLENDALE FANCY N38 (AI) (ET) (P)

2013 SUMMER GROUP BREEDPLAN EBVS								\$ INDEX VALUE	
CE DIR	CE DTRS	GL	BWT	200W	400W	600W	MCW	SUP MKT	+\$75
-0.3	+1.7	+0.3	+3.2	+33	+50	+69	+70	GRASS FED	+\$71
43%	37%	54%	70%	65%	65%	64%	58%	GRAIN FED	+\$77
MILK	SS	CWT	EMA	RIB	RUMP	RBV%	IMF%	EU	+\$91
+11	+1.5	+47	+2.5	-0.7	-1.1	+1.3	+0.0		
45%	73%	54%	48%	51%	55%	49%	50%		

A strong headed, long soft bull. Fancy A158 also the dam of Yemen E39 who had bred very well at Allendale. Note the age of this bull. Top 20% 200 Day wt, EU index. Pigment 100/100.

PURCHASER:..... \$.....





## ALLEDALE / DAYS WHITEFACE 2014

### Acc. ALLEDALE

**Lot 24 - ALLEDALE FCF BARKLY H127 (P)**

**H127**

**BIRTH DATE - 13/06/2012**

ALLEDALE NATIONAL W168 (P)  
ALLEDALE SUPERSTAR B28 (AI) (ET) (S)  
ALLEDALE DAWN T60 (AI) (P)  
**SIRE - ALLEDALE YALLAROI 2 (AI) (TW) (P)**  
KOANUI SAFETY U130 (IMP NZL) (P)  
ALLEDALE FANCY A181 (AI) (P)  
ALLEDALE FANCY U42 (AI) (P)

OKAWA YOUTH U93 (P)  
OKAWA COMMODORE 020076 (IMP NZL) (P)  
OKAWA BELLA U29 (P)  
**DAM - ALLEDALE FANCY C210 (AI) (P)**  
ALLEDALE OVERTON (P)  
ALLEDALE FANCY Y98 (P)  
ALLEDALE FANCY U187 (P)

2013 SUMMER GROUP BREEDPLAN EBVS								\$ INDEX VALUE	
CE DIR	CE DTRS	GL	BWT	200W	400W	600W	MCW	SUP MKT	+\$96
-3.7	-0.1	+0.4	+5.1	+46	+74	+98	+88	GRASS FED	+\$90
40%	35%	55%	72%	66%	66%	65%	58%	GRAIN FED	+\$94
MILK	SS	CWT	EMA	RIB	RUMP	RBV%	IMF%	EU	+\$114
+14	+2.0	+67	+3.0	+0.0	+0.1	+1.0	-0.1		
43%	76%	54%	48%	52%	57%	50%	51%		

A very easy doing, long bull. This bull has been a phenomenal performer - H 127 had the largest EMA & was the heaviest bull out of 2 groups (65 bulls) including bulls 2 months older. C210 dam of a bull sold for \$16,000 to Ridgehaven @ Dubbo. Top 1% 200,400 + 600 Day wt. Top 5% Supermarket, Grassfed, EU Indexes. Top 10% Grainfed Index. Top 20% Scrotal Size. Pigment 100/100.

PURCHASER:..... \$.....



## ALLENDALE / DAYS WHITEFACE 2014

### Acc. ALLENDALE

#### Lot 25 - ALLENDALE YEMEN H177 (ET) (P)

**H177**

**BIRTH DATE - 29/07/2012**

KAIRURU ABERDEEN 03 0047 (IMP NZL) (P)  
HARVIE TRAVELER 69T (IMP CAN) (P)  
HARVIE PEARL 129P (P)  
**SIRE - HARVIE TAILOR MADE ET 7W (IMP CAN) (AI) (P)**  
HARVIE DEYNOTE 61D (P)  
HARVIE MISS FIREFLY 51F (IMP CAN) (P)  
HARVIE MISS NYLON 1Y (P)

BRAXTON DYNASTY K243 (IMP NZL) (ET) (P)  
BRAXTON WESTWIND 120M (IMP NZL) (P)  
BRAXTON GIRLIE J118 (P)  
**DAM - ALLENDALE FANCY A158 (AI) (ET) (S)**  
RED HILL TIME BOMB (AI) (ET) (H)  
ALLENDAL FANCY V190 (AI) (P)  
ALLENDAL FANCY N38 (AI) (ET) (P)

2013 SUMMER GROUP BREEDPLAN EBVS								\$ INDEX VALUE	
CE DIR	CE DTRS	GL	BWT	200W	400W	600W	MCW	SUP MKT	
<b>+0.2</b>		<b>+0.7</b>	<b>+4.8</b>	<b>+29</b>	<b>+48</b>	<b>+67</b>	<b>+68</b>		+\$71
39%		55%	72%	66%	66%	64%	57%	GRASS FED	+\$64
MILK	SS	CWT	EMA	RIB	RUMP	RBV%	IMF%	GRAIN FED	+\$67
<b>+13</b>	<b>+1.2</b>	<b>+42</b>	<b>+3.4</b>	<b>-0.4</b>	<b>-1.0</b>	<b>+1.6</b>	<b>-0.5</b>		
51%	75%	54%	48%	51%	54%	48%	48%	EU	+\$85

A long, strong bull from donor A158. A158 dam of Yemen E39 used successfully @ Allendale with sons sell to \$20,000. Pigment 100/100.

PURCHASER:..... \$.....

### Acc. ALLENDALE

#### Lot 26 - ALLENDALE BLACKALL H137 (P)

**H137**

**BIRTH DATE - 22/06/2012**

KARINA CHERRY Z8 (P)  
TYCOLAH GOLD RUSH (S)  
TYCOLAH COUNTESS Z04 (P)  
**SIRE - ALLENDALE BARRISTER F107 (AI) (P)**  
MERAWAH JUDGE W51 (P)  
ALLENDAL SILVIA A37 (AI) (ET) (P)  
ALLENDAL SILVIA N155 (AI) (P)

JAMENA EX VIEW (P)  
ALLENDAL VAN DIEMEN A124 (P)  
ALLENDAL FANCY X213 (P)  
**DAM - ALLENDALE MARLINE C138 (P)**  
MERAWAH JUDGE W51 (P)  
ALLENDAL MARLINE Z65 (P)  
ALLENDAL MARLINE U155 (P)

2013 SUMMER GROUP BREEDPLAN EBVS							
CE DIR	CE DTRS	GL	BWT	200W	400W	600W	MCW
		+1.6	+4.2	+26	+46	+62	+57
		48%	70%	62%	63%	62%	55%
MILK	SS	CWT	EMA	RIB	RUMP	RBV%	IMF%
+10	+1.5						
42%	51%						

\$ INDEX VALUE	
SUP MKT	+\$66
GRASS FED	+\$61
GRAIN FED	+\$71
EU	+\$71

A deep, quality son of Barrister who sold at Dubbo to Edendale. C138 also the dam of a 3/4 brother sold for \$11,000 to Senior Park. Pigment 100/100.

PURCHASER:..... \$.....

## ALLENDALE / DAYS WHITEFACE 2014

### Acc. DAYS WHITEFACE

**Lot 27 - DAYS DAVENPORT H131 (AI) (P)**

**H131**

**BIRTH DATE - 25/05/2012**

KIDMAN BRADMAN W101 (AI) (P)  
KIDMAN THE DON Y220 (P)  
KIDMAN HILDA V21 (P)  
**SIRE - MELVILLE EXCEL E443 (P)**

LOWANNA POWER 2ET (IMP USA) (ET) (H)  
COURALLIE 0125 CARNATION X218 ET3 (AI) (ET) (H)  
COURALLIE CARNATION L235 ET1 (ET) (H)

MOUNT DIFFICULT FELLIS Y12 (AI) (P)  
WIRRUNA ABERCORN (AI) (P)  
WIRRUNA GOLDEN VANITY R94 (AI) (P)  
**DAM - DAYS DALLAS (ET) (P)**

ALLENDALE OCTAGONAL (AI) (P)  
DEBARRY DALLAS X75 (AI) (P)  
DEBARRY DALLAS S61 (AI) (P)

2013 SUMMER GROUP BREEDPLAN EBVS							
CE DIR	CE DTRS	GL	BWT	200W	400W	600W	MCW
<b>+0.3</b>		<b>-0.3</b>	<b>+4.5</b>	<b>+29</b>	<b>+50</b>	<b>+77</b>	<b>+72</b>
37%		64%	71%	66%	66%	70%	62%
MILK	SS	CWT	EMA	RIB	RUMP	RBV%	IMF%
<b>+12</b>	<b>+1.9</b>	<b>+50</b>	<b>+5.0</b>	<b>+0.8</b>	<b>+1.0</b>	<b>+1.6</b>	<b>+0.0</b>
43%	75%	56%	47%	51%	55%	49%	48%

\$ INDEX VALUE	
SUP MKT	+\$89
GRASS FED	+\$86
GRAIN FED	+\$91
EU	+\$104

Correct well balanced son of Excel a 400 and 600 day wt trait leader. Dallas X75 dam of Debarry Calgary used in the Allendale herd. H131 is in the top 5% of the breed for EMA and top 10% for all indexes. Pigment 100/100.

PURCHASER:..... \$.....





## ALLENDALE / DAYS WHITEFACE 2014

### Acc. DAYS WHITEFACE

#### Lot 28 - DAYS BLACKALL H61 (TW) (P)

**H61**

**BIRTH DATE - 30/04/2012**

ALLENDALE KING KONG 2 (S)  
 ALLENDALE NATIONAL W168 (P)  
 ALLENDALE CORA R22 (P)  
**SIRE - ALLENDALE SUPERSTAR B26 (AI) (ET) (P)**  
 VENA PARK SHARKA (H)  
 ALLENDALE DAWN T60 (AI) (P)  
 ALLENDALE DAWN N159 (AI) (P)

HEATHERDALE OPIUM U78 (AI) (P)  
 HEATHERDALE OPTION X155 (P)  
 HEATHERDALE LADY KANSAS V47 (P)  
**DAM - HEATHERDALE STATUESQUE C22 (AI) (P)**  
 SILVERTON WESTWIND W064 (AI) (P)  
 HEATHERDALE STATUESQUE Z108 (P)  
 HEATHERDALE STATUESQUE W92 (P)

2013 SUMMER GROUP BREEDPLAN EBVS								\$ INDEX VALUE	
CE DIR	CE DTRS	GL	BWT	200W	400W	600W	MCW	SUP MKT	+\$92
<b>+3.2</b>	<b>+1.5</b>	<b>-2.0</b>	<b>+3.3</b>	<b>+31</b>	<b>+56</b>	<b>+75</b>	<b>+72</b>	GRASS FED	+\$89
44%	38%	50%	69%	62%	60%	62%	55%	GRAIN FED	+\$99
MILK	SS	CWT	EMA	RIB	RUMP	RBV%	IMF%	EU	+\$104
<b>+13</b>	<b>+1.6</b>	<b>+53</b>	<b>+4.8</b>	<b>+0.3</b>	<b>+0.5</b>	<b>+1.2</b>	<b>+0.5</b>		
50%	55%	51%	44%	47%	50%	46%	47%		

A thick, deep bodied bull - twin to lot 29. Their full brother sold at our 2012 sale to 'The Rock' Coolah. Very solid figures being in the top 5% for EMA and all indexes. Top 10% for 400 day wt, carcase wt and IMF. Pigment 100/100.

PURCHASER:..... \$.....



## ALLENDALE / DAYS WHITEFACE 2014

### Acc. DAYS WHITEFACE

#### Lot 29 - DAYS BLACKALL H62 (TW) (P)

H62

BIRTH DATE - 30/04/2012

ALLENDALE KING KONG 2 (S)  
ALLENDALE NATIONAL W168 (P)  
ALLENDALE CORA R22 (P)  
**SIRE - ALLENDALE SUPERSTAR B26 (AI) (ET) (P)**  
VENA PARK SHARKA (H)  
ALLENDALE DAWN T60 (AI) (P)  
ALLENDALE DAWN N159 (AI) (P)

HEATHERDALE OPIUM U78 (AI) (P)  
HEATHERDALE OPTION X155 (P)  
HEATHERDALE LADY KANSAS V47 (P)  
**DAM - HEATHERDALE STATUESQUE C22 (AI) (P)**  
SILVERTON WESTWIND W064 (AI) (P)  
HEATHERDALE STATUESQUE Z108 (P)  
HEATHERDALE STATUESQUE W92 (P)

2013 SUMMER GROUP BREEDPLAN EBVS								\$ INDEX VALUE	
CE DIR	CE DTRS	GL	BWT	200W	400W	600W	MCW	SUP MKT	
+0.3	+1.0	-1.5	+5.0	+35	+57	+79	+77	GRASS FED	+\$82
44%	38%	50%	70%	66%	66%	68%	59%	GRAIN FED	+\$90
MILK	SS	CWT	EMA	RIB	RUMP	RBV%	IMF%	EU	+\$99
+13	+1.5	+52	+4.3	+0.3	+0.5	+1.1	+0.3		
50%	70%	56%	48%	52%	55%	50%	50%		

Like his twin brother lot 28 - thick and deep bodied. Solid EBV's again being in the top 10% for 200 and 400 day wt, carcase wt and IMF.  
Pigment 100/100.

PURCHASER:..... \$.....

### Acc. DAYS WHITEFACE

#### Lot 30 - DAYS DEMONSTRATOR H107 (P)

H107

BIRTH DATE - 13/05/2012

SOUTH BUKALONG WALKER 6 (AI) (P)  
SOUTH BUKALONG WALLACE 2 (P)  
SOUTH BUKALONG VICTORIA 152 (P)  
**SIRE - DAYS BEDFORD F14 (AI) (P)**  
WIRRUNA ABERCORN (AI) (P)  
ALLENDALE MARSHALL LASS D100 (AI) (P)  
ALLENDALE MARSHALL LASS Z20 (P)

DEBARRY EDEN (P)  
ALLENDALE TIPPERARY D13 (AI) (ET) (P)  
ALLENDALE FANCY U64 (AI) (P)  
**DAM - DAYS CORA F76 (P)**  
OKAWA COMMODORE 020076 (IMP NZL) (P)  
ALLENDALE CORA D26 (AI) (P)  
ALLENDALE A1 (P)

2013 SUMMER GROUP BREEDPLAN EBVS								\$ INDEX VALUE	
CE DIR	CE DTRS	GL	BWT	200W	400W	600W	MCW	SUP MKT	
-4.7		-0.3	+5.5	+41	+53	+72	+55	GRASS FED	+\$75
41%		49%	72%	67%	67%	71%	60%	GRAIN FED	+\$88
MILK	SS	CWT	EMA	RIB	RUMP	RBV%	IMF%	EU	+\$81
+17	+1.6	+48	+4.0	+1.3	+1.8	+0.2	+1.0		
40%	75%	56%	47%	52%	56%	49%	49%		

Long bodied, attractive heifers first calf. EBV's available sale day. Pigment 100/100.

PURCHASER:..... \$.....

**ALLENDALE / DAYS WHITEFACE 2014****Acc. DAYS WHITEFACE****Lot 31 - DAYS DIPLOMAT H108 (S)****H108****BIRTH DATE - 13/05/2012**

ALLENDALE KING KONG 2 (S)  
ALLENDALE NATIONAL W168 (P)  
ALLENDALE CORA R22 (P)  
**SIRE - ALLENDALE SUPERSTAR B26 (AI) (ET) (P)**  
VENA PARK SHARKA (H)  
ALLENDALE DAWN T60 (AI) (P)  
ALLENDALE DAWN N159 (AI) (P)

MARKOWEN TABOR (AI) (P)  
MARKOWEN INTRUDER (P)  
MARKOWEN LYDIA 5 (AI) (P)  
**DAM - ALLENDALE CHERRY RIPE D132 (P)**  
ONSLow SHARKA T019 (H)  
MOORLANDS CHERRY RIPE W038 (H)  
MOORLANDS CHERRY RIPE M162 (H)

2013 SUMMER GROUP BREEDPLAN EBVS								\$ INDEX VALUE	
CE DIR	CE DTRS	GL	BWT	200W	400W	600W	MCW	SUP MKT	VALUE
-0.6	-2.2	+0.2	+5.5	+30	+55	+77	+84		+\$77
44%	40%	45%	73%	68%	69%	71%	64%	GRASS FED	+\$72
MILK	SS	CWT	EMA	RIB	RUMP	RBV%	IMF%	GRAIN FED	+\$81
+8	+2.0	+46	+2.9	+0.5	+0.9	+0.1	+0.5	EU	+\$87
51%	77%	59%	51%	55%	59%	53%	53%		

Another deep bodied, smooth skinned Superstar B26 son. Top 10% for IMF. Top 15% for 400 day wt and top 20% for 600 day wt and scrotal size. Pigment 100/100.

PURCHASER:..... \$.....

**Acc. DAYS WHITEFACE****Lot 32 - DAYS H411 (HPR) (P)****H411****BIRTH DATE - 10/02/2012**

EF F524 FELLIS 821C (IMP USA) (P)  
MOUNT DIFFICULT FELLIS Y12 (AI) (P)  
MOUNT DIFFICULT TIGRESS U5 (HP)  
**SIRE - WIRRUNA ABERCORN (AI) (P)**  
BROUGHTON BOSCA BANNER (AI) (P)  
WIRRUNA GOLDEN VANITY R94 (AI) (P)  
WIRRUNA GOLDEN VANITY 246 (P)

JAMENA EX VIEW (P)  
ALLENDALE A88 (P)  
ALLENDALE FANCY X150 (P)  
**DAM - ALLENDALE D404 (HPR) (P)**  
KIDMAN COL JOY T96 (AI) (TW) (P)  
ALLENDALE DAWN A78 (HPR) (TW) (P)  
ALLENDALE DAWN T39 (P)

2013 SUMMER GROUP BREEDPLAN EBVS								\$ INDEX VALUE	
CE DIR	CE DTRS	GL	BWT	200W	400W	600W	MCW	SUP MKT	VALUE
+0.5	+2.4	-2.8	+3.5	+25	+39	+54	+50		+\$70
46%	42%	52%	71%	67%	68%	70%	63%	GRASS FED	+\$71
MILK	SS	CWT	EMA	RIB	RUMP	RBV%	IMF%	GRAIN FED	+\$71
+12	+2.3	+37	+5.1	+0.6	+0.7	+1.6	-0.4	EU	+\$86
55%	76%	59%	51%	54%	58%	52%	52%		

Exceptional muscle pattern. In the top 5% for EMA. Pigment 100/95.

PURCHASER:..... \$.....

## ALLENDALE / DAYS WHITEFACE 2014

### Acc. ALLENDALE

**Lot 33 - ALLENDALE DUKE H104 (AI) (P)**

**H104**

**BIRTH DATE - 28/05/2012**

ALLENDALE PUNTER 3 (AI) (P)  
 ALLENDALE YACKA (AI) (P)  
 ALLENDALE FLORRIE Z33 (AI) (P)  
**SIRE - ALLENDALE ANZAC E114 (P)**  
 ALLENDALE NATIONAL W168 (P)  
 ALLENDALE DAWN B22 (AI) (ET) (P)  
 ALLENDALE DAWN T60 (AI) (P)

ALLENDALE LIVEWIRE 3 (P)  
 ALLENDALE SHAMROCK (P)  
 ALLENDALE HARMONY S37 (P)  
**DAM - ALLENDALE FANCY Z260 (P)**  
 BOWEN HEADLINE H39 (AI) (P)  
 ALLENDALE FANCY N38 (AI) (ET) (P)  
 ALLENDALE FANCY 172 (P)

2013 SUMMER GROUP BREEDPLAN EBVS								\$ INDEX VALUE	
CE DIR	CE DTRS	GL	BWT	200W	400W	600W	MCW	SUP MKT	+\$89
-4.3		+0.6	+6.7	+37	+58	+83	+68	GRASS FED	+\$87
42%		73%	72%	65%	61%	61%	54%	GRAIN FED	+\$106
MILK	SS	CWT	EMA	RIB	RUMP	RBV%	IMF%	EU	+\$94
+11	+2.6		+4.1	+1.4	+2.3	-0.1	+1.4		
45%	54%		40%	44%	48%	42%	45%		

The first of 3 very good sons of Anzac E114. A very good long, deep bull from a good old cow that also is the dam of donor female Fancy D156. Top 1% IMF. Top 5% 200 Day wt, Scrotal Size, Rib & Rump, Grassfed Index. Top 10% 400, 600 Day wt, EMA, Supermarket, Grassfed Indexes. Top 15% EU Index. Pigment 95/75.

PURCHASER:..... \$.....



**ALLENDALE / DAYS WHITEFACE 2014****Acc. ALLENDALE****Lot 34 - ALLENDALE BENNETT H56 (AI) (P)****H56****BIRTH DATE - 26/04/2012**

ALLENDALE PUNTER 3 (AI) (P)  
ALLENDALE YACKA (AI) (P)  
ALLENDALE FLORRIE Z33 (AI) (P)  
**SIRE - ALLENDALE ANZAC E114 (P)**  
ALLENDALE NATIONAL W168 (P)  
ALLENDALE DAWN B22 (AI) (ET) (P)  
ALLENDALE DAWN T60 (AI) (P)

BELLCO BOWEN R074 (P)  
HEATHERDALE SOVEREIGN V11 (P)  
HEATHERDALE JANICE R65 (AI) (P)  
**DAM - HEATHERDALE BLUE MIST C25 (AI) (P)**  
HEATHERDALE LEGION X39 (AI) (P)  
HEATHERDALE BLUE MIST Z140 (P)  
HEATHERDALE BLUE MIST X12 (AI) (P)

2013 SUMMER GROUP BREEDPLAN EBVS								\$ INDEX VALUE	
CE DIR	CE DTRS	GL	BWT	200W	400W	600W	MCW	SUP MKT	+\$100
-2.1		+0.0	+5.6	+37	+61	+86	+70	GRASS FED	+\$100
42%		74%	72%	67%	68%	70%	61%	GRAIN FED	+\$115
MILK	SS	CWT	EMA	RIB	RUMP	RBV%	IMF%	EU	+\$107
+15	+3.0	+58	+5.2	+2.1	+3.2	+0.0	+1.3		
42%	76%	57%	48%	53%	57%	51%	50%		

A well muscled, deep bull with handy figures. Blue Mist C25 also granddam of Collingwood who sold for \$20,000 to Bowmont & Bingeberry Studs. Top 1% Rib & Rump, IMF & Grainfed Index. Top 5% 200, 400 Day wt, Scrotal Size, EMA, Supermarket, Grassfed, EU Indexes. Top 10% 600 Day wt. Pigment 100/100.

PURCHASER:..... \$.....



## ALLENDALE / DAYS WHITEFACE 2014

### Acc. ALLENDALE

**Lot 35 - ALLENDALE FCF DUBVEGAS H87 (AI) (TW) (P)**

**H87**

**BIRTH DATE - 21/05/2012**

ALLENDALE PUNTER 3 (AI) (P)  
 ALLENDALE YACKA (AI) (P)  
 ALLENDALE FLORRIE Z33 (AI) (P)  
**SIRE - ALLENDALE ANZAC E114 (P)**  
 ALLENDALE NATIONAL W168 (P)  
 ALLENDALE DAWN B22 (AI) (ET) (P)  
 ALLENDALE DAWN T60 (AI) (P)

MOUNT DIFFICULT FELLIS Y12 (AI) (P)  
 WIRRUNA ABERCORN (AI) (P)  
 WIRRUNA GOLDEN VANITY R94 (AI) (P)  
**DAM - ALLENDALE FANCY D207 (AI) (P)**  
 ALLENDALE KHATMANDU 2 (S)  
 ALLENDALE FANCY U66 (AI) (P)  
 ALLENDALE FANCY L70 (P)

2013 SUMMER GROUP BREEDPLAN EBVS							
CE DIR	CE DTRS	GL	BWT	200W	400W	600W	MCW
<b>-3.0</b>		<b>-0.9</b>	<b>+6.0</b>	<b>+37</b>	<b>+62</b>	<b>+84</b>	<b>+72</b>
42%		58%	70%	65%	65%	66%	59%
MILK	SS	CWT	EMA	RIB	RUMP	RBY%	IMF%
<b>+15</b>	<b>+4.3</b>	<b>+54</b>	<b>+5.1</b>	<b>+1.2</b>	<b>+2.0</b>	<b>+0.9</b>	<b>+0.5</b>
41%	70%	54%	46%	51%	55%	49%	49%

\$ INDEX VALUE	
SUP MKT	+\$96
GRASS FED	+\$96
GRAIN FED	+\$105
EU	+\$111

Another good bull by Anzac E114 who is breeding very well at Centennial and Injemira studs. A well muscled, deep bodied bull H87's dam is an outstanding Abercorn daughter. Top 1% Scrotal Size. Top 5% 200, 400 Day wt, EMA, Rib & Rump, Supermarket, Grassfed, Grainfed & EU Indexes. Top 10% 600 Day wt & IMF. Pigment 100/100.

PURCHASER:..... \$.....





**ALLENDAL / DAYS WHITEFACE 2014****Acc. ALLENDALE****Lot 36 - ALLENDALE DALBY H3 (AI) (P)****H3****BIRTH DATE - 10/04/2012**

ALLENDAL NATIONAL W168 (P)  
 ALLENDALE SUPERSTAR B28 (AI) (ET) (S)  
 ALLENDALE DAWN T60 (AI) (P)  
**SIRE - ALLENDALE ADVANTAGE E14 (AI) (P)**  
 ALLENDALE PUNTER 3 (AI) (P)  
 ALLENDALE FANCY A301 (P)  
 ALLENDALE FANCY N38 (AI) (ET) (P)

DEBARRY EDEN (P)  
 ALLENDALE ROBIN HOOD C30 (AI) (ET) (P)  
 ALLENDALE FANCY U5 (AI) (P)  
**DAM - ALLENDALE GLADIOLA E31 (P)**  
 ALLENDALE SHAMROCK 3 (AI) (S)  
 ALLENDALE GLADIOLA C108 (P)  
 ALLENDALE GLADIOLA A51 (P)

2013 SUMMER GROUP BREEDPLAN EBVS								\$ INDEX VALUE	
CE DIR	CE DTRS	GL	BWT	200W	400W	600W	MCW	SUP MKT	+\$86
<b>+1.3</b>		<b>-2.1</b>	<b>+4.0</b>	<b>+36</b>	<b>+55</b>	<b>+74</b>	<b>+57</b>	GRASS FED	+\$81
35%		70%	63%	65%	66%	68%	59%	GRAIN FED	+\$92
MILK	SS	CWT	EMA	RIB	RUMP	RBV%	IMF%	EU	+\$93
<b>+18</b>	<b>+1.0</b>	<b>+50</b>	<b>+3.2</b>	<b>+0.4</b>	<b>+0.5</b>	<b>+0.7</b>	<b>+0.5</b>		
38%	75%	55%	45%	50%	54%	47%	46%		

A quality, soft, meaty bull by Advantage who had 2 sons sell for \$10,000 last year to Sacul Investments and Coryule. Top 10% 200 Day wt, Milk, IMF, Supermarket, Grassfed, Grainfed Indexes. Top 15% 400 Day wt, EU Index. Pigment 100/100.

PURCHASER:..... \$.....

**Acc. ALLENDALE****Lot 37 - ALLENDALE DAWSON H8 (AI) (TW) (P)****H8****BIRTH DATE - 12/04/2012**

KAIRURU ABERDEEN 03 0047 (IMP NZL) (P)  
 HARVIE TRAVELER 69T (IMP CAN) (P)  
 HARVIE PEARL 129P (P)  
**SIRE - HARVIE TAILOR MADE ET 7W (IMP CAN) (AI) (P)**  
 HARVIE DEYNOTE 61D (P)  
 HARVIE MISS FIREFLY 51F (IMP CAN) (P)  
 HARVIE MISS NYLON 1Y (P)

ALLENDAL PUNTER 3 (AI) (P)  
 ALLENDALE TIPPERARY B219 (AI) (P)  
 ALLENDALE FANCY U64 (AI) (P)  
**DAM - ALLENDALE TRILBY D237 (P)**  
 ALLENDALE NATIONAL W168 (P)  
 ALLENDALE TRILBY Z18 (P)  
 ALLENDALE TRILBY V99 (AI) (P)

2013 SUMMER GROUP BREEDPLAN EBVS								\$ INDEX VALUE	
CE DIR	CE DTRS	GL	BWT	200W	400W	600W	MCW	SUP MKT	+\$76
		<b>-0.1</b>	<b>+5.5</b>	<b>+35</b>	<b>+57</b>	<b>+76</b>		GRASS FED	+\$70
		46%	56%	53%	53%	51%		GRAIN FED	+\$69
MILK	SS	CWT	EMA	RIB	RUMP	RBV%	IMF%	EU	+\$90
<b>+13</b>	<b>+2.4</b>		<b>+3.3</b>	<b>+0.5</b>	<b>+0.6</b>	<b>+0.8</b>	<b>-0.5</b>		
44%	45%		35%	40%	42%	36%	40%		

A long, correct bull with an excellent hindquarter. Top 10% 200, 400 Day wt, Scrotal Size. Top 20% 600 Day wt, EU Index. Pigment 100/100.

PURCHASER:..... \$.....

## ALLENDALE / DAYS WHITEFACE 2014

### Acc. ALLENDALE

#### Lot 38 - ALLENDALE CHARLEVILLE H74 (P)

H74

BIRTH DATE - 09/05/2012

ALLENDALE ROSEMOUNT 2 (AI) (P)  
ALLENDALE VAGABOND A74 (AI) (P)  
SUZELLE MARLINE U54 (AI) (ET) (P)  
**SIRE - MERRINA A74 REACTOR E148 (P)**  
KESWICK ROGER MOORE T81 (AI) (P)  
MERRINA T81 FANTASY A33 (AI) (P)  
MERRINA Q3 FANTASY V62 (P)

MOUNT DIFFICULT FELLIS Y12 (AI) (P)  
WIRRUNA ABERCORN (AI) (P)  
WIRRUNA GOLDEN VANITY R94 (AI) (P)  
**DAM - ALLENDALE MINERVA D152 (AI) (P)**  
RED HILL ROCKFORD ROY (AI) (H)  
RED HILL MINERVA 170 (H)  
RED HILL MINERVA 157 (H)

2013 SUMMER GROUP BREEDPLAN EBVS							
CE DIR	CE DTRS	GL	BWT	200W	400W	600W	MCW
-1.4		-1.0	+5.5	+33	+49	+68	+69
36%		48%	70%	65%	65%	69%	59%
MILK	SS	CWT	EMA	RIB	RUMP	RBV%	IMF%
+14	+0.1	+44	+4.5	-0.1	-0.3	+1.6	-0.5
43%	75%	55%	47%	52%	56%	49%	48%

\$ INDEX VALUE	
SUP MKT	+\$66
GRASS FED	+\$58
GRAIN FED	+\$59
EU	+\$78

A long, good skinned Reactor son. Top 10% EMA. Top 20% 200 Day wt. Pigment 100/100.

PURCHASER:..... \$.....

### Acc. DAYS WHITEFACE

#### Lot 39 - DAYS DERBY H130 (P)

H130

BIRTH DATE - 23/05/2012

SOUTH BUKALONG WALKER 6 (AI) (P)  
SOUTH BUKALONG WALLACE 2 (P)  
SOUTH BUKALONG VICTORIA 152 (P)  
**SIRE - DAYS BEDFORD F14 (AI) (P)**  
WIRRUNA ABERCORN (AI) (P)  
ALLENDALE MARSHALL LASS D100 (AI) (P)  
ALLENDALE MARSHALL LASS Z20 (P)

DEBARRY EDEN (P)  
ALLENDALE TIPPERARY D13 (AI) (ET) (P)  
ALLENDALE FANCY U64 (AI) (P)  
**DAM - DAYS DAWN F66 (P)**  
ALLENDALE NATIONAL W168 (P)  
ALLENDALE DAWN D102 (AI) (P)  
ALLENDALE DAWN A245 (P)

2013 SUMMER GROUP BREEDPLAN EBVS							
CE DIR	CE DTRS	GL	BWT	200W	400W	600W	MCW
-2.8		-1.3	+5.2	+38	+52	+76	+57
37%		47%	70%	64%	65%	69%	59%
MILK	SS	CWT	EMA	RIB	RUMP	RBV%	IMF%
+16	+2.1	+52	+5.3	+1.1	+1.7	+1.3	+0.8
39%	75%	54%	46%	51%	55%	49%	48%

\$ INDEX VALUE	
SUP MKT	+\$91
GRASS FED	+\$89
GRAIN FED	+\$102
EU	+\$99

A quality, correct heifers first calf. Top 5% for 200 day wt, EMA, IMF, supermarket, grassfed and grainfed indexes. Top 10% for carcass wt and EU index. Pigment 100/100.

PURCHASER:..... \$.....



## ALLENDALE / DAYS WHITEFACE 2014

### Acc. DAYS WHITEFACE

**Lot 40 - DAYS H76 (S)**

**H76**

**BIRTH DATE - 04/05/2012**

ALLENDALE KING KONG 2 (S)  
ALLENDALE NATIONAL W168 (P)  
ALLENDALE CORA R22 (P)  
**SIRE - ALLENDALE SUPERSTAR B26 (AI) (ET) (P)**  
VENA PARK SHARKA (H)  
ALLENDALE DAWN T60 (AI) (P)  
ALLENDALE DAWN N159 (AI) (P)

BRAXTON GIANT 4 (IMP NZL) (P)  
BRAXTON BONANZA 225H (IMP NZL) (ET) (P)  
BRAXTON BEAUGIRL 67 (P)  
**DAM - DAYS GLADIOLA E5 (AI) (HP)**  
ALLENDALE SHAMROCK 2 (P)  
ALLENDALE GLADIOLA B177 (P)  
ALLENDALE GLADIOLA X178 (P)

2013 SUMMER GROUP BREEDPLAN EBVS								\$ INDEX VALUE	
CE DIR	CE DTRS	GL	BWT	200W	400W	600W	MCW	SUP MKT	+\$71
+0.3	+1.5	-1.1	+4.0	+28	+47	+63	+65	GRASS FED	+\$69
44%	39%	50%	73%	67%	68%	71%	63%	GRAIN FED	+\$75
MILK	SS	CWT	EMA	RIB	RUMP	RBV%	IMF%	EU	+\$80
+6	+1.2	+39	+2.1	+0.6	+1.2	-0.2	+0.4		
49%	76%	58%	50%	54%	58%	52%	52%		

Good shaped, smooth low birth weight bull with a strong top, in the top 15% for IMF. Pigment 100/100.

PURCHASER:..... \$.....

### Acc. DAYS WHITEFACE

**Lot 41 - DAYS H81 (AI) (P)**

**H81**

**BIRTH DATE - 05/05/2012**

COOTHARABA ELGIN 2 (H)  
COOTHARABA MAGNUM (H)  
COOTHARABA PAULINE 279 (H)  
**SIRE - MAWARRA VIRGINIAN (H)**  
YALLAROO TORNADO T008 (AI) (H)  
MAWARRA CHERRY RIPE 263 (H)  
MAWARRA CHERRY RIPE 206 (AI) (TW) (H)

MOUNT DIFFICULT FELLIS Y12 (AI) (P)  
WIRRUNA ABERCORN (AI) (P)  
WIRRUNA GOLDEN VANITY R94 (AI) (P)  
**DAM - DAYS CORA E7 (AI) (P)**  
MERAWAH JUDGE W51 (P)  
ALLENDALE CORA Y208 (P)  
ALLENDALE CORA T112 (AI) (P)

2013 SUMMER GROUP BREEDPLAN EBVS								\$ INDEX VALUE	
CE DIR	CE DTRS	GL	BWT	200W	400W	600W	MCW	SUP MKT	+\$78
-4.4		-0.8	+6.5	+32	+57	+83	+82	GRASS FED	+\$70
41%		70%	72%	68%	69%	72%	63%	GRAIN FED	+\$75
MILK	SS	CWT	EMA	RIB	RUMP	RBV%	IMF%	EU	+\$96
+12	+3.2	+48	+4.3	-0.5	-0.9	+2.0	-0.5		
46%	77%	58%	50%	54%	59%	52%	53%		

Deep bodied, strong dark coloured bull by Wodonga Grand Champion Mawarra Virginian. Top 10% for 400 and 600 day wt and IMF. Pigment 100/100.

PURCHASER:..... \$.....

**ALLENDALE / DAYS WHITEFACE 2014****Acc. DAYS WHITEFACE****Lot 42 - DAYS DYNAMIC H90 (P)****H90****BIRTH DATE - 08/05/2012**

ALLENDALE KING KONG 2 (S)  
ALLENDALE NATIONAL W168 (P)  
ALLENDALE CORA R22 (P)  
**SIRE - PINE HILL ENERGISE E604 (AI) (P)**  
PINE HILL FLOW Z582 (AI) (P)  
PINE HILL SIRIKIT B705 (P)  
PINE HILL SIRIKIT Y635 (AI) (P)

DEBARRY EDEN (P)  
ALLENDALE TIPPERARY D13 (AI) (ET) (P)  
ALLENDALE FANCY U64 (AI) (P)  
**DAM - DAYS FLORRIE F81 (AI) (P)**  
MARKOWEN INTRUDER (P)  
ALLENDALE FLORRIE D107 (P)  
ALLENDALE FLORRIE X37 (AI) (P)

2013 SUMMER GROUP BREEDPLAN EBVS								\$ INDEX VALUE	
CE DIR	CE DTRS	GL	BWT	200W	400W	600W	MCW	SUP MKT	+\$67
-5.2		+0.4	+6.3	+39	+52	+71	+68	GRASS FED	+\$60
41%		48%	72%	67%	67%	71%	60%	GRAIN FED	+\$70
MILK	SS	CWT	EMA	RIB	RUMP	RBV%	IMF%	EU	+\$73
+14	+1.4	+43	+3.6	+0.4	+0.4	+0.7	+0.5		
39%	75%	56%	47%	52%	56%	49%	49%		

Strong headed, deep bodied heifers first calf in the top 5% for 200 day wt and top 10% for IMF. Pigment 100/100.

PURCHASER:..... \$.....

**Acc. DAYS WHITEFACE****Lot 43 - DAYS DIVIDEND H110 (P)****H110****BIRTH DATE - 15/05/2012**

ALLENDALE KING KONG 2 (S)  
ALLENDALE NATIONAL W168 (P)  
ALLENDALE CORA R22 (P)  
**SIRE - PINE HILL ENERGISE E604 (AI) (P)**  
PINE HILL FLOW Z582 (AI) (P)  
PINE HILL SIRIKIT B705 (P)  
PINE HILL SIRIKIT Y635 (AI) (P)

SOUTH BUKALONG WALKER 6 (AI) (P)  
SOUTH BUKALONG WALLACE 2 (P)  
SOUTH BUKALONG VICTORIA 152 (P)  
**DAM - DAYS FLORRIE F31 (AI) (P)**  
ALLENDALE UNRIVALLED (TW) (P)  
ALLENDALE FLORRIE D158 (P)  
ALLENDALE FLORRIE Y28 (P)

2013 SUMMER GROUP BREEDPLAN EBVS								\$ INDEX VALUE	
CE DIR	CE DTRS	GL	BWT	200W	400W	600W	MCW	SUP MKT	+\$84
+1.7	+4.5	-1.6	+2.4	+32	+47	+59	+50	GRASS FED	+\$85
42%	35%	55%	73%	68%	68%	71%	61%	GRAIN FED	+\$98
MILK	SS	CWT	EMA	RIB	RUMP	RBV%	IMF%	EU	+\$90
+18	+2.0	+45	+4.3	+0.8	+1.1	+0.6	+1.1		
42%	76%	57%	48%	53%	57%	51%	51%		

Correct, low birth weight heifers first calf with good calving ease EBV's. Top 5% IMF and grainfed index. Top 10% milk, EMA and grassfed index. Pigment 100/100.

PURCHASER:..... \$.....

## ALLEDALE / DAYS WHITEFACE 2014

### Acc. DAYS WHITEFACE

**Lot 44 - DAYS H74 (P)**

**H74**

**BIRTH DATE - 04/05/2012**

SOUTH BUKALONG WALKER 6 (AI) (P)  
SOUTH BUKALONG WALLACE 2 (P)  
SOUTH BUKALONG VICTORIA 152 (P)  
**SIRE - DAYS BEDFORD F14 (AI) (P)**  
WIRRUNA ABERCORN (AI) (P)  
ALLEDALE MARSHALL LASS D100 (AI) (P)  
ALLEDALE MARSHALL LASS Z20 (P)

ALLEDALE VAGABOND A74 (AI) (P)  
ALLEDALE WATERHOUSE D1 (P)  
ALLEDALE MARLINE X185 (P)  
**DAM - DAYS FANCY F59 (P)**  
ALLEDALE UNRIVALLED (TW) (P)  
ALLEDALE FANCY B167 (P)  
ALLEDALE FANCY X25 (AI) (P)

2013 SUMMER GROUP BREEDPLAN EBVS							
CE DIR	CE DTRS	GL	BWT	200W	400W	600W	MCW
<b>+4.3</b>		<b>-3.4</b>	<b>+1.2</b>	<b>+27</b>	<b>+39</b>	<b>+55</b>	<b>+46</b>
37%		48%	70%	64%	65%	69%	59%
MILK	SS	CWT	EMA	RIB	RUMP	RBV%	IMF%
<b>+16</b>	<b>+2.0</b>	<b>+46</b>	<b>+5.2</b>	<b>+1.3</b>	<b>+2.0</b>	<b>+0.5</b>	<b>+1.0</b>
40%	75%	55%	47%	52%	56%	49%	49%

\$ INDEX VALUE	
SUP MKT	+\$87
GRASS FED	+\$91
GRAIN FED	+\$101
EU	+\$95

Another low birth weight heifers first calf. Top 5% gestation length, EMA, IMF, grassfed and grainfed indexes. Top 10% calving ease, birth weight and supermarket index. Pigment 100/100.

PURCHASER:..... \$.....

### Acc. ALLEDALE

**Lot 45 - ALLEDALE DARWIN H38 (P)**

**H38**

**BIRTH DATE - 20/04/2012**

MOUNT DIFFICULT FELLIS Y12 (AI) (P)  
WIRRUNA ABERCORN (AI) (P)  
WIRRUNA GOLDEN VANITY R94 (AI) (P)  
**SIRE - ALLEDALE YEMEN E39 (P)**  
BRAXTON WESTWIND 120M (IMP NZL) (P)  
ALLEDALE FANCY A158 (AI) (ET) (S)  
ALLEDALE FANCY V190 (AI) (P)

OKAWA COMMODORE 020076 (IMP NZL) (P)  
ALLEDALE WASHINGTON D57 (AI) (P)  
ALLEDALE FANCY Z59 (P)  
**DAM - ALLEDALE CHERRY RIPE F73 (P)**  
MORGANVALE YALUMBA (P)  
ALLEDALE CHERRY RIPE D94 (P)  
ALLEDALE CHERRY RIPE Z170 (P)

2013 SUMMER GROUP BREEDPLAN EBVS							
CE DIR	CE DTRS	GL	BWT	200W	400W	600W	MCW
<b>-1.6</b>		<b>+0.2</b>	<b>+4.6</b>	<b>+30</b>	<b>+50</b>	<b>+72</b>	<b>+65</b>
40%		49%	71%	66%	66%	65%	57%
MILK	SS	CWT	EMA	RIB	RUMP	RBV%	IMF%
<b>+10</b>	<b>+1.9</b>	<b>+44</b>	<b>+3.9</b>	<b>+1.6</b>	<b>+2.5</b>	<b>+0.7</b>	<b>+0.0</b>
39%	75%	53%	47%	52%	56%	50%	50%

\$ INDEX VALUE	
SUP MKT	+\$83
GRASS FED	+\$82
GRAIN FED	+\$83
EU	+\$96

A muscular, sirey headed bull used on stud heifers in 2012. Top 5% Rib & Rump. Top 10% Grassfed Index. Top 15% EMA, Supermarket, EU Indexes. Top 20% Scrotal Size, Grainfed Index. Pigment 100/100.

PURCHASER:..... \$.....

**ALLENDALE / DAYS WHITEFACE 2014****Acc. ALLENDALE****Lot 46 - ALLENDALE DIXY H107 (AI) (S)****H107****BIRTH DATE - 29/05/2012**

ALLENDALE NATIONAL W168 (P)  
 ALLENDALE SUPERSTAR B28 (AI) (ET) (S)  
 ALLENDALE DAWN T60 (AI) (P)  
**SIRE - ALLENDALE ADVANTAGE E14 (AI) (P)**  
 ALLENDALE PUNTER 3 (AI) (P)  
 ALLENDALE FANCY A301 (P)  
 ALLENDALE FANCY N38 (AI) (ET) (P)

JAMENA EX VIEW (P)  
 ALLENDALE A88 (P)  
 ALLENDALE FANCY X150 (P)  
**DAM - ALLENDALE LAST DAY E10 (P)**  
 ALLENDALE TREATY Z216 (P)  
 ALLENDALE LAST DAY B257 (P)  
 ALLENDALE LAST DAY T43 (AI) (P)

2013 SUMMER GROUP BREEDPLAN EBVS								\$ INDEX VALUE	
CE DIR	CE DTRS	GL	BWT	200W	400W	600W	MCW	SUP MKT	
<b>+1.8</b>		<b>+1.8</b>	<b>+1.8</b>	<b>+23</b>	<b>+41</b>	<b>+52</b>	<b>+46</b>		+\$71
35%		70%	70%	66%	66%	64%	55%	GRASS FED	+\$74
MILK	SS	CWT	EMA	RIB	RUMP	RBV%	IMF%	GRAIN FED	+\$88
<b>+12</b>	<b>+2.1</b>	<b>+35</b>	<b>+2.5</b>	<b>+1.4</b>	<b>+2.1</b>	<b>-1.1</b>	<b>+1.5</b>	EU	+\$71
38%	76%	52%	45%	49%	54%	47%	46%		

A correct, good hind quartered bull. An excellent bull for heifers - used in the stud 2012. Top 1% IMF. Top 5% Rib & Rump. Top 10% Birthweight. Top 15% Scrotal Size, Grainfed Index. Pigment 100/100.

PURCHASER:..... \$.....

**Acc. ALLENDALE****Lot 47 - ALLENDALE DAPPER H21 (P)****H21****BIRTH DATE - 17/04/2012**

KOANUI ROCKET Q334 (P)  
 KOANUI ROCKET 0219 (IMP NZL) (P)  
 KOANUI ANGEL R187 (P)  
**SIRE - MORGANVALE FEVOLA (AI) (P)**  
 HEATHERDALE OPTION X155 (P)  
 MORGANVALE STATUESQUE C215 (P)  
 HEATHERDALE STATUESQUE W222 (P)

EBBX CALGARY (AI) (ET) (P)  
 DEBARRY CALGARY C58 (P)  
 DEBARRY DALLAS X75 (AI) (P)  
**DAM - ALLENDALE FANCY F118 (P)**  
 ALLENDALE NATIONAL W168 (P)  
 ALLENDALE FANCY Z35 (AI) (P)  
 ALLENDALE FANCY N40 (AI) (ET) (P)

2013 SUMMER GROUP BREEDPLAN EBVS								\$ INDEX VALUE	
CE DIR	CE DTRS	GL	BWT	200W	400W	600W	MCW	SUP MKT	
<b>+4.6</b>		<b>-0.3</b>	<b>+1.4</b>	<b>+26</b>	<b>+49</b>	<b>+66</b>	<b>+61</b>		+\$88
39%		45%	71%	65%	66%	68%	58%	GRASS FED	+\$86
MILK	SS	CWT	EMA	RIB	RUMP	RBV%	IMF%	GRAIN FED	+\$89
<b>+18</b>	<b>+1.9</b>	<b>+49</b>	<b>+3.9</b>	<b>+0.3</b>	<b>+0.6</b>	<b>+1.0</b>	<b>+0.0</b>	EU	+\$100
40%	74%	54%	46%	50%	54%	48%	47%		

A tall, sirey headed heifers first calf, Z35 dam of Waterloo sold to Minlacowe and Karlson Pines. Top 10% Birthweight, Milk, Supermarket, Grassfed, EU Indexes. Top 15% EMA, Grainfed Index. Top 20% Scrotal Size. Pigment 98/95.

PURCHASER:..... \$.....

## ALLENDALE / DAYS WHITEFACE 2014

### Acc. ALLENDALE

#### Lot 48 - ALLENDALE DEALER H65 (P)

H65

BIRTH DATE - 30/04/2012

KOANUI ROCKET Q334 (P)  
KOANUI ROCKET Q219 (IMP NZL) (P)  
KOANUI ANGEL R187 (P)  
**SIRE – MORGANVALE FEVOLA (AI) (P)**  
HEATHERDALE OPTION X155 (P)  
MORGANVALE STATUESQUE C215 (P)  
HEATHERDALE STATUESQUE W222 (P)

KARINA CHERRY Z8 (P)  
TYCOLAH GOLD RUSH (S)  
TYCOLAH COUNTESS Z04 (P)  
**DAM – ALLENDALE DAISY F61 (AI) (P)**  
MERAWAH JUDGE W51 (P)  
ALLENDALE DAISY Z80 (TW) (P)  
ALLENDALE DAISY V107 (AI) (P)

2013 SUMMER GROUP BREEDPLAN EBVS							
CE DIR	CE DTRS	GL	BWT	200W	400W	600W	MCW
+3.2		+0.9	+3.1	+24	+49	+64	+67
38%		53%	71%	65%	66%	69%	59%
MILK	SS	CWT	EMA	RIB	RUMP	RBV%	IMF%
+14	+1.7	+42	+4.1	-0.4	-0.4	+1.8	-0.8
41%	74%	55%	46%	51%	55%	48%	48%

\$ INDEX VALUE	
SUP MKT	+\$76
GRASS FED	+\$71
GRAIN FED	+\$68
EU	+\$92

A deep, muscular heifers first calf. Top 10% EMA. Top 15% EU index. Pigment 100/100.

PURCHASER:..... \$.....

### Acc. ALLENDALE

#### Lot 49 - ALLENDALE UNBELIEVABLE H101 (P)

H101

BIRTH DATE - 27/05/2012

ALLENDALE VAGABOND A74 (AI) (P)  
ALLENDALE WATERHOUSE D1 (P)  
ALLENDALE MARLINE X185 (P)  
**SIRE – ALLENDALE BULLS-EYE F38 (AI) (P)**  
OKAWA COMMODORE 020076 (IMP NZL) (P)  
ALLENDALE CORA C14 (AI) (P)  
MOORLANDS CORA W063 (H)

PR WS ROCKFORD 007 (IMP USA) (H)  
RED HILL TIME BOMB (AI) (ET) (H)  
RED HILL FIRST DAY 29 ET2 (AI) (ET) (H)  
**DAM – ALLENDALE FANCY V190 (AI) (P)**  
BOWEN HEADLINE H39 (AI) (P)  
ALLENDALE FANCY N38 (AI) (ET) (P)  
ALLENDALE FANCY 172 (P)

2013 SUMMER GROUP BREEDPLAN EBVS							
CE DIR	CE DTRS	GL	BWT	200W	400W	600W	MCW
+1.9		-0.5	+3.9	+28	+34	+49	+48
39%		53%	63%	64%	66%	68%	59%
MILK	SS	CWT	EMA	RIB	RUMP	RBV%	IMF%
+12	+1.6	+33	+3.5	-0.1	+0.0	+1.0	+0.0
49%	74%	56%	48%	51%	55%	49%	49%

\$ INDEX VALUE	
SUP MKT	+\$62
GRASS FED	+\$60
GRAIN FED	+\$65
EU	+\$73

A correct Bulls Eye son, sons of V190 have sold to KC McCallum and Co and Rosebank Partnership. Pigment 100/100.

PURCHASER:..... \$.....

**ALLENDALE / DAYS WHITEFACE 2014****Acc. ALLENDALE****Lot 50 - ALLENDALE COSTELLO H37 (AI) (P)****H37****BIRTH DATE - 20/04/2012**

INVERARY 298 STORM R811 (H)  
LLANGLOTHAN STORM U964 (H)  
LLANGLOTHAN THANKFUL 13 (H)  
**SIRE - GLENDAN PARK STORM W134 (H)**  
ZUM PARK CLADON (TW) (H)  
ZUM PARK ATHENA (H)  
ZUM PARK MINERVA 3 (AI) (ET) (H)

MOUNT DIFFICULT FELLIS Y12 (AI) (P)  
WIRRUNA ABERCORN (AI) (P)  
WIRRUNA GOLDEN VANITY R94 (AI) (P)  
**DAM - ALLENDALE MARLINE E90 (P)**  
MERAWAH JUDGE W51 (P)  
ALLENDAL MARLINE Z153 (P)  
ALLENDAL MARLINE U117 (P)

2013 SUMMER GROUP BREEDPLAN EBVS								\$ INDEX VALUE	
CE DIR	CE DTRS	GL	BWT	200W	400W	600W	MCW	SUP MKT	+\$57
+0.9	+0.0	+1.6	+1.3	+16	+32	+48	+59	GRASS FED	+\$54
46%	40%	72%	73%	69%	69%	72%	64%	GRAIN FED	+\$53
MILK	SS	CWT	EMA	RIB	RUMP	RBV%	IMF%	EU	+\$66
+12	+0.9	+29	+3.2	+0.5	+0.8	+1.0	-0.1		
56%	77%	60%	53%	57%	61%	55%	55%		

A correct heifer bull. E90's first calf sold at last years sale for \$5,000 to G & S Storer. Top 10% Birthweight. Pigment 100/100.

PURCHASER:..... \$.....

**Acc. ALLENDALE****Lot 51 - ALLENDALE DIAMANTINA H48 (AI) (P)****H48****BIRTH DATE - 22/04/2012**

ALLENDAL ROSEMOUNT 2 (AI) (P)  
ALLENDAL VAGABOND A74 (AI) (P)  
SUZELLE MARLINE U54 (AI) (ET) (P)  
**SIRE - ALLENDALE WATERHOUSE D1 (P)**  
ALLENDAL LANDLORD 3 (AI) (P)  
ALLENDAL MARLINE X185 (P)  
ALLENDAL MARLINE U46 (AI) (P)

ALLENDAL NATIONAL W168 (P)  
ALLENDAL SUPERSTAR B26 (AI) (ET) (P)  
ALLENDAL DAWN T60 (AI) (P)  
**DAM - ALLENDALE DAISY E111 (P)**  
ALLENDAL KENWORTH 2 (P)  
ALLENDAL DAISY T175 (ET) (P)  
ALLENDAL DAISY M7 (H)

2013 SUMMER GROUP BREEDPLAN EBVS								\$ INDEX VALUE	
CE DIR	CE DTRS	GL	BWT	200W	400W	600W	MCW	SUP MKT	+\$77
+2.5	+1.7	-1.7	+2.7	+27	+46	+60	+66	GRASS FED	+\$77
45%	39%	72%	74%	69%	70%	72%	64%	GRAIN FED	+\$91
MILK	SS	CWT	EMA	RIB	RUMP	RBV%	IMF%	EU	+\$86
+11	+3.2	+42	+4.8	-0.1	+0.1	+0.5	+1.0		
50%	77%	61%	55%	58%	62%	54%	57%		

A quality bull that would be suitable for heifers. Top 5% Scrotal Size, EMA, IMF. Top 10% Grainfed index. Top 15% Grassfed Index. Top 20% Birthweight. Pigment 100/100.

PURCHASER:..... \$.....



**ALLENDALE / DAYS WHITEFACE 2014****Acc. DAYS WHITEFACE****Lot 52 - DAYS WARRANT H86 (P)****H86****BIRTH DATE - 07/05/2012**

ALLENDALE ROSEMOUNT 2 (AI) (P)  
ALLENDALE VAGABOND A74 (AI) (P)  
SUZELLE MARLINE U54 (AI) (ET) (P)  
**SIRE - ALLENDALE WATERHOUSE D1 (P)**  
ALLENDALE LANDLORD 3 (AI) (P)  
ALLENDALE MARLINE X185 (P)  
ALLENDALE MARLINE U46 (AI) (P)

ACC BLUEPRINT R70 (AI) (P)  
MERAWAH JUDGE W51 (P)  
MERAWAH COLLEEN N49 (P)  
**DAM - ALLENDALE MARLINE U1 (P)**  
BOBANKEN PACIFIC P143 (AI) (P)  
ALLENDALE MARLINE U1  
ALLENDALE MARLINE M102 (HP)

2013 SUMMER GROUP BREEDPLAN EBVS								\$ INDEX VALUE	
CE DIR	CE DTRS	GL	BWT	200W	400W	600W	MCW	SUP MKT	+\$75
<b>+3.8</b>	<b>+3.3</b>	<b>-0.8</b>	<b>+2.0</b>	<b>+25</b>	<b>+49</b>	<b>+64</b>	<b>+77</b>	GRASS FED	+\$71
46%	40%	60%	75%	70%	71%	73%	66%	GRAIN FED	+\$76
MILK	SS	CWT	EMA	RIB	RUMP	RBV%	IMF%	EU	+\$88
<b>+9</b>	<b>+3.2</b>	<b>+43</b>	<b>+3.4</b>	<b>-0.7</b>	<b>-0.9</b>	<b>+0.5</b>	<b>+0.1</b>		
55%	78%	62%	55%	58%	62%	55%	57%		

Tall long bodied bull with a good birth weight to growth spread of figures. Top 5% scrotal size, best 10% birth weight and best 15% calving ease. Pigment 100/100.

PURCHASER:..... \$.....

**Acc. DAYS WHITEFACE****Lot 53 - DAYS YOKOHAMA H95 (AI) (P)****H95****BIRTH DATE - 29/04/2012**

KIDMAN BRADMAN W101 (AI) (P)  
KIDMAN THE DON Y220 (P)  
KIDMAN HILDA V21 (P)  
**SIRE - MELVILLE EXCEL E443 (P)**  
LOWANNA POWER 2ET (IMP USA) (ET) (H)  
COURALLIE 0125 CARNATION X218 ET3 (AI) (ET) (H)  
COURALLIE CARNATION L235 ET1 (ET) (H)

KIDMAN COL JOY T96 (AI) (TW) (P)  
ALLENDALE TRUSTY (P)  
ALLENDALE LAST DAY T43 (AI) (P)  
**DAM - ALLENDALE FANCY A126 (P)**  
ALLENDALE LANDLORD 3 (AI) (P)  
ALLENDALE FANCY Y19 (AI) (P)  
ALLENDALE FANCY U84 (AI) (P)

2013 SUMMER GROUP BREEDPLAN EBVS								\$ INDEX VALUE	
CE DIR	CE DTRS	GL	BWT	200W	400W	600W	MCW	SUP MKT	+\$81
<b>+3.1</b>		<b>-1.0</b>	<b>+2.4</b>	<b>+23</b>	<b>+41</b>	<b>+60</b>	<b>+62</b>	GRASS FED	+\$82
36%		70%	72%	63%	60%	61%	55%	GRAIN FED	+\$83
MILK	SS	CWT	EMA	RIB	RUMP	RBV%	IMF%	EU	+\$94
<b>+15</b>	<b>+1.2</b>		<b>+4.7</b>	<b>+1.4</b>	<b>+2.1</b>	<b>+0.7</b>	<b>+0.1</b>		
45%	51%		38%	43%	46%	41%	43%		

Big, long Excel son. Top 5% for EMA, top 10% for grassfed index. Top 15% calving ease, birth weight and supermarket index. Pigment 100/100.

PURCHASER:..... \$.....

## ALLENDALE / DAYS WHITEFACE 2014

### Acc. DAYS WHITEFACE

**Lot 54 - DAYS H97 (TW) (S)**

**H97**

**BIRTH DATE - 10/05/2012**

ALLENDALE KING KONG 2 (S)  
ALLENDALE NATIONAL W168 (P)  
ALLENDALE CORA R22 (P)  
**SIRE - PINE HILL ENERGISE E604 (AI) (P)**  
PINE HILL FLOW Z582 (AI) (P)  
PINE HILL SIRIKIT B705 (P)  
PINE HILL SIRIKIT Y635 (AI) (P)

MOUNT DIFFICULT FELLIS Y12 (AI) (P)  
WIRRUNA ABERCORN (AI) (P)  
WIRRUNA GOLDEN VANITY R94 (AI) (P)  
**DAM - DAYS MAVIS F43 (I)**  
ALLENDALE TUMBARUMBA (AI) (P)  
ALLENDALE MAVIS A200  
ALLENDALE MAVIS X86 (P)

2013 SUMMER GROUP BREEDPLAN EBVS							
CE DIR	CE DTRS	GL	BWT	200W	400W	600W	MCW
<b>-4.3</b>	<b>+1.7</b>	<b>-1.2</b>	<b>+4.6</b>	<b>+34</b>	<b>+45</b>	<b>+61</b>	<b>+56</b>
41%	35%	49%	69%	66%	66%	67%	58%
MILK	SS	CWT	EMA	RIB	RUMP	RBV%	IMF%
<b>+13</b>	<b>+2.4</b>	<b>+41</b>	<b>+4.9</b>	<b>+0.7</b>	<b>+0.7</b>	<b>+1.2</b>	<b>+0.3</b>
41%	68%	55%	45%	49%	53%	47%	48%

\$ INDEX VALUE	
SUP MKT	+\$67
GRASS FED	+\$65
GRAIN FED	+\$71
EU	+\$77

Correct heifers first calf in the top 5% for EMA and top 10% for scrotal. Pigment 100/85.

PURCHASER:..... \$.....

### Acc. DAYS WHITEFACE

**Lot 55 - DAYS DEFENDER H88 (P)**

**H88**

**BIRTH DATE - 08/05/2012**

ALLENDALE KING KONG 2 (S)  
ALLENDALE NATIONAL W168 (P)  
ALLENDALE CORA R22 (P)  
**SIRE - PINE HILL ENERGISE E604 (AI) (P)**  
PINE HILL FLOW Z582 (AI) (P)  
PINE HILL SIRIKIT B705 (P)  
PINE HILL SIRIKIT Y635 (AI) (P)

ALLENDALE SUPERSTAR B28 (AI) (ET) (S)  
ALLENDALE ROBIN HOOD D194 (P)  
ALLENDALE FANCY U5 (AI) (P)  
**DAM - DAYS FANCY F69 (P)**  
MORGANVALE YALUMBA (P)  
ALLENDALE FANCY C154 (P)  
ALLENDALE FANCY U42 (AI) (P)

2013 SUMMER GROUP BREEDPLAN EBVS							
CE DIR	CE DTRS	GL	BWT	200W	400W	600W	MCW
<b>-0.4</b>		<b>-1.3</b>	<b>+3.3</b>	<b>+33</b>	<b>+48</b>	<b>+60</b>	<b>+54</b>
41%		49%	73%	68%	68%	71%	61%
MILK	SS	CWT	EMA	RIB	RUMP	RBV%	IMF%
<b>+13</b>	<b>-0.2</b>	<b>+45</b>	<b>+4.6</b>	<b>+0.4</b>	<b>+0.3</b>	<b>+0.9</b>	<b>+1.0</b>
39%	76%	57%	47%	52%	56%	50%	50%

\$ INDEX VALUE	
SUP MKT	+\$72
GRASS FED	+\$68
GRAIN FED	+\$82
EU	+\$75

Good topped, correct heifers first calf in the top 5% for EMA and IMF. Pigment 100/98.

PURCHASER:..... \$.....

**ALLENDALE / DAYS WHITEFACE 2014****Acc. DAYS WHITEFACE****Lot 56 - DAYS H137 (P)****H137****BIRTH DATE - 28/05/2012**

ALLENDALE KING KONG 2 (S)  
ALLENDALE NATIONAL W168 (P)  
ALLENDALE CORA R22 (P)  
**SIRE - PINE HILL ENERGISE E604 (AI) (P)**  
PINE HILL FLOW Z582 (AI) (P)  
PINE HILL SIRIKIT B705 (P)  
PINE HILL SIRIKIT Y635 (AI) (P)

DEBARRY EDEN (P)  
ALLENDALE TIPPERARY D13 (AI) (ET) (P)  
ALLENDALE FANCY U64 (AI) (P)  
**DAM - DAYS TRILBY F115 (P)**  
WIRRUNA ABERCORN (AI) (P)  
ALLENDALE TRILBY D105 (AI) (P)  
ALLENDALE TRILBY Y108 (P)

2013 SUMMER GROUP BREEDPLAN EBVS								\$ INDEX VALUE	
CE DIR	CE DTRS	GL	BWT	200W	400W	600W	MCW	SUP MKT	+\$64
-4.7		-0.5	+5.0	+34	+46	+56	+42	GRASS FED	+\$64
41%		49%	72%	67%	67%	71%	60%	GRAIN FED	+\$73
MILK	SS	CWT	EMA	RIB	RUMP	RBV%	IMF%	EU	+\$70
+15	+2.3	+38	+4.7	+1.1	+1.5	+0.7	+0.6		
39%	75%	56%	47%	52%	56%	49%	49%		

Another heifers first calf with good carcass data. Top 5% for EMA and top 10% for IMF and scrotal size. Pigment 100/100.

PURCHASER:..... \$.....

**Acc. ALLENDALE****Lot 57 - ALLENDALE CASPER H138 (P)****H138****BIRTH DATE - 24/06/2012**

MOUNT DIFFICULT FELLIS Y12 (AI) (P)  
WIRRUNA ABERCORN (AI) (P)  
WIRRUNA GOLDEN VANITY R94 (AI) (P)  
**SIRE - ALLENDALE YEMEN E39 (P)**  
BRAXTON WESTWIND 120M (IMP NZL) (P)  
ALLENDALE FANCY A158 (AI) (ET) (S)  
ALLENDALE FANCY V190 (AI) (P)

OKAWA YOUTH U93 (P)  
OKAWA COMMODORE 020076 (IMP NZL) (P)  
OKAWA BELLA U29 (P)  
**DAM - ALLENDALE MARLINE D44 (AI) (P)**  
ALLENDALE ROCKHAMPTON (P)  
ALLENDALE MARLINE Z26 (P)  
SUZELLE MARLINE U54 (AI) (ET) (P)

2013 SUMMER GROUP BREEDPLAN EBVS								\$ INDEX VALUE	
CE DIR	CE DTRS	GL	BWT	200W	400W	600W	MCW	SUP MKT	+\$79
+1.7	+1.7	-0.9	+4.0	+29	+50	+71	+76	GRASS FED	+\$74
43%	37%	56%	61%	60%	64%	61%	56%	GRAIN FED	+\$73
MILK	SS	CWT	EMA	RIB	RUMP	RBV%	IMF%	EU	+\$98
+14	+2.3	+46	+3.3	-0.4	-0.7	+1.6			
44%	54%	53%	43%	47%	50%	45%			

Tall, dark and muscular. Top 10% Scrotal Size, EU index. Top 20% Supermarket, Grassfed Indexes. Pigment 100/100.

PURCHASER:..... \$.....

## ALLENDALE / DAYS WHITEFACE 2014

### Acc. ALLENDALE

**Lot 58 - ALLENDALE DEVONPORT H130 (P)**

**H130**

**BIRTH DATE - 16/06/2012**

DEBARRY EDEN (P)  
ALLENDALE WALHALLOW D149 (AI) (P)  
ALLENDALE CORA W35 (P)  
**SIRE - ALLENDALE BANJO F69 (P)**  
ALLENDALE UNRIVALLED (TW) (P)  
ALLENDALE MOTH D144 (P)  
ALLENDALE MOTH X19 (AI) (P)

DEBARRY EDEN (P)  
ALLENDALE TIPPERARY D13 (AI) (ET) (P)  
ALLENDALE FANCY U64 (AI) (P)  
**DAM - ABBERLEY MARLINE F5 (P)**  
MARKOWEN INTRUDER (P)  
ABBERLEY MARLINE 1 (P)  
ALLENDALE MARLINE Y189 (P)

2013 SUMMER GROUP BREEDPLAN EBVS							
CE DIR	CE DTRS	GL	BWT	200W	400W	600W	MCW
		<b>+0.6</b>	<b>+5.3</b>	<b>+37</b>	<b>+56</b>	<b>+73</b>	<b>+58</b>
		36%	56%	59%	60%	57%	50%
MILK	SS	CWT	EMA	RIB	RUMP	RBY%	IMF%
<b>+15</b>	<b>+1.8</b>		<b>+3.3</b>	<b>+0.7</b>	<b>+1.0</b>	<b>+0.5</b>	<b>+0.1</b>
35%	74%		43%	47%	51%	45%	44%

\$ INDEX VALUE	
SUP MKT	+\$85
GRASS FED	+\$81
GRAIN FED	+\$87
EU	+\$95

A deep, long, soft heifers first calf. Banjo F69 purchased for \$5,500 by Edendale in 2012. Top 5% 200 Day wt. Top 10% 400 Day wt, Supermarket, Grassfed Indexes. Top 15% Grainfed, EU Indexes. Top 20% Rib & Rump. Pigment 100/100.

PURCHASER:..... \$.....



**ALLEDALE / DAYS WHITEFACE 2014****Acc. ALLEDALE****Lot 59 - ALLEDALE ZANZIBAR H134 (P)****H134****BIRTH DATE - 18/06/2012**

ALLEDALE NATIONAL W168 (P)  
ALLEDALE SUPERSTAR B28 (AI) (ET) (S)  
ALLEDALE DAWN T60 (AI) (P)  
**SIRE - ALLEDALE YALLAROI 2 (AI) (TW) (P)**  
KOANUI SAFETY U130 (IMP NZL) (P)  
ALLEDALE FANCY A181 (AI) (P)  
ALLEDALE FANCY U42 (AI) (P)

ALLEDALE ROSEMOUNT 2 (AI) (P)  
ALLEDALE PRECISION Z101 (P)  
ALLEDALE ELIZABETH S8 (AI) (P)  
**DAM - ALLEDALE FLORRIE B130 (P)**  
MARKOWEN GENERAL (P)  
ALLEDALE FLORRIE Y4 (P)  
ALLEDALE FLORRIE T146 (P)

2013 SUMMER GROUP BREEDPLAN EBVS								\$ INDEX VALUE	
CE DIR	CE DTRS	GL	BWT	200W	400W	600W	MCW	SUP MKT	+\$73
-4.5		-0.1	+6.0	+40	+59	+80	+77	GRASS FED	+\$67
36%		47%	72%	66%	66%	65%	58%	GRAIN FED	+\$74
MILK	SS	CWT	EMA	RIB	RUMP	RBV%	IMF%	EU	+\$82
+13	+1.9	+47	+2.3	+0.4	+0.8	+0.2	+0.4		
43%	76%	53%	46%	51%	55%	48%	49%		

A very long bull from a consistent breeding dam. B130 had a son in last years sale selling to AC Day and Sons Western Flat. Top 5% 200 Day wt. Top 10% 400 Day wt. Top 15% 600 Day wt, IMF. Top 20% Scrotal Size. Pigment 100/100.

PURCHASER:..... \$.....

**Acc. ALLEDALE****Lot 60 - ALLEDALE CHURCHILL H185 (ET) (S)****H185****BIRTH DATE - 03/08/2012**

KAIRURU ABERDEEN 03 0047 (IMP NZL) (P)  
HARVIE TRAVELER 69T (IMP CAN) (P)  
HARVIE PEARL 129P (P)  
**SIRE - HARVIE TAILOR MADE ET 7W (IMP CAN) (AI) (P)**  
HARVIE DEYNOTE 61D (P)  
HARVIE MISS FIREFLY 51F (IMP CAN) (P)  
HARVIE MISS NYLON 1Y (P)

ALLEDALE NATIONAL W168 (P)  
ALLEDALE SUPERSTAR B28 (AI) (ET) (S)  
ALLEDALE DAWN T60 (AI) (P)  
**DAM - ALLEDALE FANCY D156 (P)**  
ALLEDALE SHAMROCK (P)  
ALLEDALE FANCY Z260 (P)  
ALLEDALE FANCY N38 (AI) (ET) (P)

2013 SUMMER GROUP BREEDPLAN EBVS								\$ INDEX VALUE	
CE DIR	CE DTRS	GL	BWT	200W	400W	600W	MCW	SUP MKT	+\$82
		+0.4	+4.5	+31	+54	+72	+66	GRASS FED	+\$79
		50%	71%	65%	65%	63%	56%	GRAIN FED	+\$83
MILK	SS	CWT	EMA	RIB	RUMP	RBV%	IMF%	EU	+\$97
+13	+2.3	+48	+4.3	+0.3	+0.3	+1.2	-0.2		
47%	73%	51%	44%	49%	53%	46%	46%		

A long well made son of Tailor Made. Full brother to lot 60. Top 10% Scrotal Size, EMA, EU Index. Top 15% 400, Supermarket, Grassfed Indexes. Top 20% Grainfed Index. Pigment 100/65.

PURCHASER:..... \$.....

## ALLENDALE / DAYS WHITEFACE 2014

### Acc. ALLENDALE

#### Lot 61 - ALLENDALE CHURCHILL (ET) (S)

**H189**

**BIRTH DATE - 07/08/2012**

KAIRURU ABERDEEN 03 0047 (IMP NZL) (P)  
 HARVIE TRAVELER 69T (IMP CAN) (P)  
 HARVIE PEARL 129P (P)  
**SIRE - HARVIE TAILOR MADE ET 7W (IMP CAN) (AI) (P)**  
 HARVIE DEYNOTE 61D (P)  
 HARVIE MISS FIREFLY 51F (IMP CAN) (P)  
 HARVIE MISS NYLON 1Y (P)

ALLENDALE NATIONAL W168 (P)  
 ALLENDALE SUPERSTAR B28 (AI) (ET) (S)  
 ALLENDALE DAWN T60 (AI) (P)  
**DAM - ALLENDALE FANCY D156 (P)**  
 ALLENDALE SHAMROCK (P)  
 ALLENDALE FANCY Z260 (P)  
 ALLENDALE FANCY N38 (AI) (ET) (P)

2013 SUMMER GROUP BREEDPLAN EBVS								\$ INDEX VALUE	
CE DIR	CE DTRS	GL	BWT	200W	400W	600W	MCW	SUP MKT	+\$80
		<b>+0.6</b>	<b>+5.6</b>	<b>+35</b>	<b>+57</b>	<b>+77</b>	<b>+71</b>	GRASS FED	+\$75
		49%	62%	63%	64%	61%	54%	GRAIN FED	+\$78
MILK	SS	CWT	EMA	RIB	RUMP	RBV%	IMF%	EU	+\$94
<b>+13</b>	<b>+2.3</b>	<b>+49</b>	<b>+3.7</b>	<b>+0.4</b>	<b>+0.5</b>	<b>+0.9</b>	<b>-0.2</b>		
47%	72%	51%	44%	49%	53%	46%	46%		

A long, deep son of Tailor Made. Full brother to lot 61. Top 10% 200, 400 Day wt, Scrotal Size. Top 15% EU index. Top 20% 600 Day wt, EMA, Supermarket, Grassfed Indexes. Pigment 80/100.

PURCHASER:..... \$.....





**ALLENDAL / DAYS WHITEFACE 2014****Acc. ALLENDALE****Lot 62 - ALLENDALE ANZAC H167 (ET) (P)****H167****BIRTH DATE - 15/07/2012**

HARVIE LADIES MAN 4L (IMP CAN) (P)  
EBBX CALGARY (AI) (ET) (P)  
PALLABAH IRISH ROSE Q102 (P)  
**SIRE - DEBARRY CALGARY C58 (P)**  
ALLENDAL OCTAGONAL (AI) (P)  
DEBARRY DALLAS X75 (AI) (P)  
DEBARRY DALLAS S61 (AI) (P)

ALLENDAL KING KONG 2 (S)  
ALLENDAL NATIONAL W168 (P)  
ALLENDAL CORA R22 (P)  
**DAM - ALLENDALE DAWN B22 (AI) (ET) (P)**  
VENA PARK SHARKA (H)  
ALLENDAL DAWN T60 (AI) (P)  
ALLENDAL DAWN N159 (AI) (P)

2013 SUMMER GROUP BREEDPLAN EBVS								\$ INDEX VALUE	
CE DIR	CE DTRS	GL	BWT	200W	400W	600W	MCW	SUP MKT	VALUE
-0.3	+1.0	-0.6	+3.1	+31	+53	+71	+66		+\$86
44%	39%	47%	71%	66%	66%	65%	59%	GRASS FED	+\$85
MILK	SS	CWT	EMA	RIB	RUMP	RBV%	IMF%	GRAIN FED	+\$108
+12	+1.3	+50	+4.4	+0.7	+0.9	+0.3	+1.9	EU	+\$88
50%	75%	55%	50%	53%	57%	52%	52%		

A deep, good hindquartered son of B22. Top 1% IMF. Top 5% Grainfed Index. Top 10% EMA, Supermarket, Grassfed Indexes. Top 20% 400 Day wt, Rib & Rump. Pigment 100/100.

PURCHASER:..... \$.....

**Acc. ALLENDALE****Lot 63 - ALLENDALE ADRENALIN H199 (S)****H199****BIRTH DATE - 04/09/2012**

KOANUI ROCKET Q334 (P)  
KOANUI ROCKET Q219 (IMP NZL) (P)  
KOANUI ANGEL R187 (P)  
**SIRE - MORGANVALE FEVOLA (AI) (P)**  
HEATHERDALE OPTION X155 (P)  
MORGANVALE STATUESQUE C215 (P)  
HEATHERDALE STATUESQUE W222 (P)

ALLENDAL SPOT ON (AI) (P)  
ALLENDAL UNRIVALLED (TW) (P)  
ALLENDAL GLADIOLA T169 (ET) (P)  
**DAM - ALLENDALE FANCY C36 (P)**  
ALLENDAL LANDLORD 3 (AI) (P)  
ALLENDAL FANCY Y19 (AI) (P)  
ALLENDAL FANCY U84 (AI) (P)

2013 SUMMER GROUP BREEDPLAN EBVS								\$ INDEX VALUE	
CE DIR	CE DTRS	GL	BWT	200W	400W	600W	MCW	SUP MKT	VALUE
-2.1	+3.7	+0.8	+6.7	+35	+62	+90	+105		+\$90
40%	35%	50%	69%	64%	64%	63%	57%	GRASS FED	+\$81
MILK	SS	CWT	EMA	RIB	RUMP	RBV%	IMF%	GRAIN FED	+\$80
+21	+2.8	+53	+3.9	+0.2	+0.6	+1.2	-0.5	EU	+\$109
45%	71%	52%	45%	50%	53%	48%	48%		

Big framed bull from donor dam C36. Half brother sells as Lot 72. Top 5% 400, 600 Day wt, Milk, Scrotal Size, EU Index. Top 10% 200 Day wt, Supermarket, Grassfed Indexes. Top 15% EMA. Pigment 100/100.

PURCHASER:..... \$.....

## ALLEDALE / DAYS WHITEFACE 2014

### Acc. DAYS WHITEFACE

**Lot 64 - DAYS DIMENSION H152 (P)**

**H152**

**BIRTH DATE - 06/06/2012**

ALLEDALE KING KONG 2 (S)  
ALLEDALE NATIONAL W168 (P)  
ALLEDALE CORA R22 (P)  
**SIRE - ALLEDALE SUPERSTAR B26 (AI) (ET) (P)**  
VENA PARK SHARKA (H)  
ALLEDALE DAWN T60 (AI) (P)  
ALLEDALE DAWN N159 (AI) (P)

ALLEDALE SPOT ON (AI) (P)  
ALLEDALE UNRIVALLED (TW) (P)  
ALLEDALE GLADIOLA T169 (ET) (P)  
**DAM - ALLEDALE FANCY D106 (P)**  
BRAXTON WESTWIND 120M (IMP NZL) (P)  
ALLEDALE FANCY A202 (AI) (P)  
ALLEDALE FANCY V130 (P)

2013 SUMMER GROUP BREEDPLAN EBVS								\$ INDEX VALUE	
CE DIR	CE DTRS	GL	BWT	200W	400W	600W	MCW	SUP MKT	+\$84
-2.1	+1.5	+0.4	+6.0	+36	+58	+79	+79	GRASS FED	+\$80
44%	39%	47%	73%	67%	68%	66%	61%	GRAIN FED	+\$88
MILK	SS	CWT	EMA	RIB	RUMP	RBV%	IMF%	EU	+\$97
+14	+2.2	+51	+3.9	+0.4	+0.8	+0.8	+0.3		
50%	77%	56%	51%	55%	59%	53%	53%		

Deep bodied bull with plenty of weight. Top 10% for 200 and 400 day wt, carcass wt and EU index. Pigment 100/100.

PURCHASER:..... \$.....



## ALLENDALE / DAYS WHITEFACE 2014

### Acc. DAYS WHITEFACE

**Lot 65 - DAYS DOMINANT H183 (P)**

**H183**

**BIRTH DATE - 21/07/2012**

ALLENDALE ROSEMOUNT 2 (AI) (P)  
 ALLENDALE VAGABOND A74 (AI) (P)  
 SUZELLE MARLINE U54 (AI) (ET) (P)  
**SIRE - ALLENDALE WATERHOUSE D1 (P)**  
 ALLENDALE LANDLORD 3 (AI) (P)  
 ALLENDALE MARLINE X185 (P)  
 ALLENDALE MARLINE U46 (AI) (P)

ALLENDALE VAN DIEMEN A124 (P)  
 ALLENDALE WARATAH 2 (P)  
 ALLENDALE FANCY Z2 (AI) (P)  
**DAM - DAYS FANCY E64 (P)**  
 DEBARRY EDEN (P)  
 ALLENDALE FANCY C134 (AI) (P)  
 ALLENDALE FANCY X127 (P)

2013 SUMMER GROUP BREEDPLAN EBVS								\$ INDEX VALUE	
CE DIR	CE DTRS	GL	BWT	200W	400W	600W	MCW	SUP MKT	+\$93
-2.2	+2.8	-0.3	+6.0	+39	+65	+94	+96	GRASS FED	+\$87
43%	36%	54%	72%	67%	68%	66%	61%	GRAIN FED	+\$96
MILK	SS	CWT	EMA	RIB	RUMP	RBV%	IMF%	EU	+\$112
+10	+5.4	+52	+2.8	-0.6	-0.8	+0.5	+0.1		
49%	76%	58%	53%	56%	60%	52%	55%		

Big, strong heavy bull with plenty of growth. Top 1% for scrotal size. Top 5% for 200, 400 and 600 day wt, supermarket and EU indexes. Top 10% carcass wt, grassfed and grainfed indexes. Pigment 100/100.

PURCHASER:..... \$.....

### Acc. DAYS WHITEFACE

**Lot 66 - DAYS DEBONAIR H191 (P)**

**H191**

**BIRTH DATE - 26/07/2012**

ALLENDALE ROSEMOUNT 2 (AI) (P)  
 ALLENDALE VAGABOND A74 (AI) (P)  
 SUZELLE MARLINE U54 (AI) (ET) (P)  
**SIRE - ALLENDALE WATERHOUSE D1 (P)**  
 ALLENDALE LANDLORD 3 (AI) (P)  
 ALLENDALE MARLINE X185 (P)  
 ALLENDALE MARLINE U46 (AI) (P)

ALLENDALE MUSKETEER (AI) (S)  
 ALLENDALE OVERTON (P)  
 ALLENDALE FANCY R43 (P)  
**DAM - ALLENDALE MARSHALL LASS Z20 (P)**  
 SMITHSTON TAM O'SHANTER ET2 (AI) (ET) (H)  
 ALLENDALE MARSHALL LASS W32 (AI) (P)  
 ALLENDALE MARSHALL LASS T10 (AI) (P)

2013 SUMMER GROUP BREEDPLAN EBVS								\$ INDEX VALUE	
CE DIR	CE DTRS	GL	BWT	200W	400W	600W	MCW	SUP MKT	+\$89
-2.1	+2.5	-1.5	+4.7	+35	+57	+82	+80	GRASS FED	+\$84
47%	40%	60%	74%	69%	69%	68%	63%	GRAIN FED	+\$98
MILK	SS	CWT	EMA	RIB	RUMP	RBV%	IMF%	EU	+\$100
+13	+3.1	+53	+4.9	-0.2	-0.1	+1.1	+0.7		
55%	77%	60%	56%	58%	62%	55%	58%		

Big and strong from a cow who is the grandmother of the Bedford bulls - F14 a sire in this catalogue and G26 Reserve Grand Champion at Wodonga selling for \$20,000 to 'Allegria' Poll Herefords. Top 5% for EMA, IMF, scrotal size and grainfed index. Top 10% for 200, 400 and 600 day wts, carcass wt and all other indexes. Pigment 100/100.

PURCHASER:..... \$.....

## ALLEDALE / DAYS WHITEFACE 2014

### Acc. DAYS WHITEFACE

**Lot 67 - DAYS CITIZEN H181 (S)**

**H181**

**BIRTH DATE - 20/07/2012**

ALLEDALE KING KONG 2 (S)  
ALLEDALE NATIONAL W168 (P)  
ALLEDALE CORA R22 (P)  
**SIRE - ALLEDALE SUPERSTAR B26 (AI) (ET) (P)**  
VENA PARK SHARKA (H)  
ALLEDALE DAWN T60 (AI) (P)  
ALLEDALE DAWN N159 (AI) (P)

ALLEDALE PUNTER 3 (AI) (P)  
ALLEDALE TIPPERARY A255 (P)  
ALLEDALE FANCY U64 (AI) (P)  
**DAM - ALLEDALE CHERRY RIPE C220 (P)**  
COURALLIE TOP GUN (AI) (H)  
MOORLANDS CHERRY RIPE W014 (H)  
MOORLANDS CHERRY RIPE T162 (H)

2013 SUMMER GROUP BREEDPLAN EBVS							
CE DIR	CE DTRS	GL	BWT	200W	400W	600W	MCW
-0.5	-1.3	+1.2	+4.4	+33	+57	+73	+72
41%	36%	41%	72%	66%	66%	65%	57%
MILK	SS	CWT	EMA	RIB	RUMP	RBV%	IMF%
+11	+1.8	+51	+3.2	+0.5	+1.0	+0.5	-0.4
47%	76%	54%	50%	53%	57%	51%	51%

\$ INDEX VALUE	
SUP MKT	+\$75
GRASS FED	+\$70
GRAIN FED	+\$68
EU	+\$88

Big, long bodied bull. Top 10% for 400 day wt and carcase wt. Pigment 100/100.

PURCHASER:..... \$.....

### Acc. DAYS WHITEFACE

**Lot 68 - DAYS BERMUDA H194 (S)**

**H194**

**BIRTH DATE - 31/07/2012**

ALLEDALE VAGABOND A74 (AI) (P)  
ALLEDALE WATERHOUSE D1 (P)  
ALLEDALE MARLINE X185 (P)  
**SIRE - DAYS WIZARD F5 (AI) (ET) (S)**  
ALLEDALE NATIONAL W168 (P)  
ALLEDALE DAWN Z21 (AI) (P)  
ALLEDALE DAWN V54 (AI) (P)

MINLACOWIE VALIANT NICK (AI) (ET) (P)  
KERLSON PINES YARD MASTER Y26 (S)  
KERLSON PINES ALMOND R5 (P)  
**DAM - ALLEDALE BLISSFUL B209 (P)**  
YALGOO AUTHOR L69 (AI) (S)  
BROUGHTON BLISSFUL P018 (P)  
BROUGHTON BLISSFUL G39 (P)

2013 SUMMER GROUP BREEDPLAN EBVS							
CE DIR	CE DTRS	GL	BWT	200W	400W	600W	MCW
+1.7		-0.2	+2.5	+29	+50	+67	+70
36%		48%	71%	65%	64%	62%	54%
MILK	SS	CWT	EMA	RIB	RUMP	RBV%	IMF%
+14	+1.5	+52	+5.5	-0.8	-1.2	+2.2	+0.0
43%	74%	51%	45%	49%	53%	46%	46%

\$ INDEX VALUE	
SUP MKT	+\$81
GRASS FED	+\$77
GRAIN FED	+\$83
EU	+\$96

Long, smooth skinned Wizard son. Top 5% EMA. Top 10% carcase wt. Best 15% birth weight, supermarket, grassfed and EU indexes. Pigment 100/100.

PURCHASER:..... \$.....

**ALLENDALE / DAYS WHITEFACE 2014****Acc. DAYS WHITEFACE****Lot 69 - DAYS CAVALIER H197 (P)****H197****BIRTH DATE - 06/08/2012**

ALLENDALE VAGABOND A74 (AI) (P)  
ALLENDALE WATERHOUSE D1 (P)  
ALLENDALE MARLINE X185 (P)  
**SIRE - DAYS WIZARD F5 (AI) (ET) (S)**  
ALLENDALE NATIONAL W168 (P)  
ALLENDALE DAWN Z21 (AI) (P)  
ALLENDALE DAWN V54 (AI) (P)

ALLENDALE NATIONAL W168 (P)  
ALLENDALE VENGEANCE A49 (AI) (P)  
ALLENDALE DAISY Y17 (AI) (P)  
**DAM - ALLENDALE SILVIA D27 (AI) (TW) (P)**  
MERAWAH JUDGE W51 (P)  
ALLENDALE SILVIA A19 (AI) (ET) (P)  
ALLENDALE SILVIA N155 (AI) (P)

2013 SUMMER GROUP BREEDPLAN EBVS								\$ INDEX VALUE	
CE DIR	CE DTRS	GL	BWT	200W	400W	600W	MCW	SUP MKT	+\$86
-0.9		+0.4	+5.4	+40	+62	+87	+99	GRASS FED	+\$78
38%		51%	71%	66%	65%	63%	57%	GRAIN FED	+\$93
MILK	SS	CWT	EMA	RIB	RUMP	RBV%	IMF%	EU	+\$95
+17	+2.6	+55	+3.1	-0.3	-0.4	+0.1	+1.0		
44%	75%	53%	46%	49%	53%	47%	47%		

Young bull with plenty of growth. Top 5% for 200, 400 and 600 day wt, carcase wt and scrotal size. Top 10% for EMA, grassfed and grainfed indexes. Pigment 100/100.

PURCHASER:..... \$.....

**Acc. ALLENDALE****Lot 70 - ALLENDALE CLIFFHANGER H161 (P)****H161****BIRTH DATE - 11/07/2012**

EBBX CALGARY (AI) (ET) (P)  
DEBARRY CALGARY C58 (P)  
DEBARRY DALLAS X75 (AI) (P)  
**SIRE - ALLENDALE BUSHMAN F119 (P)**  
OKAWA COMMODORE 020076 (IMP NZL) (P)  
ALLENDAL DAISY C26 (AI) (P)  
ALLENDAL DAISY Z210 (P)

ALLENDAL OSCAR 2 (AI) (P)  
ALLENDAL UTOPIA (P)  
ALLENDAL TRILBY X132 (AI) (P)  
**DAM - ALLENDALE CHERRY RIPE B195 (P)**  
MERAWAH JUDGE W51 (P)  
ALLENDAL CHERRY RIPE Z108 (P)  
MOORLANDS CHERRY RIPE V120 (H)

2013 SUMMER GROUP BREEDPLAN EBVS								\$ INDEX VALUE	
CE DIR	CE DTRS	GL	BWT	200W	400W	600W	MCW	SUP MKT	+\$68
			+5.2	+32	+52	+70	+65	GRASS FED	+\$62
			69%	62%	63%	60%	54%	GRAIN FED	+\$71
MILK	SS	CWT	EMA	RIB	RUMP	RBV%	IMF%	EU	+\$78
+9	+2.2		+2.7	-0.4	-0.8	+1.0	+0.1		
39%	74%		43%	48%	53%	46%	44%		

A long, soft bull by Bushman who sold for \$28,000 at Dubbo to Guilford Stud. Top 15% Scrotal Size. Top 20% 200, 400 Day wt. Pigment

PURCHASER:..... \$.....

## ALLEDALE / DAYS WHITEFACE 2014

### Acc. ALLEDALE

#### Lot 71 - ALLEDALE BASIL BRUSH H150 (P)

H150

BIRTH DATE - 02/07/2012

KARINA CHERRY Z8 (P)  
TYCOLAH GOLD RUSH (S)  
TYCOLAH COUNTESS Z04 (P)  
**SIRE - ALLEDALE BARRISTER F107 (AI) (P)**  
MERAWAH JUDGE W51 (P)  
ALLEDALE SILVIA A37 (AI) (ET) (P)  
ALLEDALE SILVIA N155 (AI) (P)

ALLEDALE SPOT ON (AI) (P)  
ALLEDALE UNRIVALLED (TW) (P)  
ALLEDALE GLADIOLA T169 (ET) (P)  
**DAM - ALLEDALE FANCY B19 (AI) (P)**  
4K KFF KAZZ (IMP USA) (P)  
ALLEDALE FANCY V9 (AI) (P)  
ALLEDALE FANCY Q79 (P)

2013 SUMMER GROUP BREEDPLAN EBVS							
CE DIR	CE DTRS	GL	BWT	200W	400W	600W	MCW
		<b>+1.4</b>	<b>+5.3</b>	<b>+31</b>	<b>+52</b>	<b>+68</b>	<b>+66</b>
		54%	70%	64%	64%	62%	56%
MILK	SS	CWT	EMA	RIB	RUMP	RBV%	IMF%
<b>+11</b>	<b>+2.3</b>	<b>+40</b>	<b>+2.9</b>	<b>+0.8</b>	<b>+1.1</b>	<b>-0.3</b>	<b>+0.9</b>
44%	75%	51%	46%	50%	55%	48%	47%

\$ INDEX VALUE	
SUP MKT	+\$73
GRASS FED	+\$69
GRAIN FED	+\$82
EU	+\$77

Deep, good skinned bull. Top 5% IMF, Top 10% Scrotal Size. Top 15% Rib & Rump. Top 20% 400 Day wt, Grainfed Index. Pigment 100/100.

PURCHASER:..... \$.....

### Acc. ALLEDALE

#### Lot 72 - ALLEDALE ADRENALIN H178 (ET) (P)

H178

BIRTH DATE - 29/07/2012

KAIRURU ABERDEEN 03 0047 (IMP NZL) (P)  
HARVIE TRAVELER 69T (IMP CAN) (P)  
HARVIE PEARL 129P (P)  
**SIRE - HARVIE TAILOR MADE ET 7W (IMP CAN) (AI) (P)**  
HARVIE DEYNOTE 61D (P)  
HARVIE MISS FIREFLY 51F (IMP CAN) (P)  
HARVIE MISS NYLON 1Y (P)

ALLEDALE SPOT ON (AI) (P)  
ALLEDALE UNRIVALLED (TW) (P)  
ALLEDALE GLADIOLA T169 (ET) (P)  
**DAM - ALLEDALE FANCY C36 (P)**  
ALLEDALE LANDLORD 3 (AI) (P)  
ALLEDALE FANCY Y19 (AI) (P)  
ALLEDALE FANCY U84 (AI) (P)

2013 SUMMER GROUP BREEDPLAN EBVS							
CE DIR	CE DTRS	GL	BWT	200W	400W	600W	MCW
		<b>+0.0</b>	<b>+7.1</b>	<b>+36</b>	<b>+59</b>	<b>+83</b>	<b>+98</b>
		52%	71%	65%	65%	64%	56%
MILK	SS	CWT	EMA	RIB	RUMP	RBV%	IMF%
<b>+18</b>	<b>+1.6</b>	<b>+48</b>	<b>+3.3</b>	<b>+0.3</b>	<b>+0.2</b>	<b>+0.6</b>	<b>-0.4</b>
49%	74%	52%	45%	50%	53%	46%	47%

\$ INDEX VALUE	
SUP MKT	+\$76
GRASS FED	+\$66
GRAIN FED	+\$66
EU	+\$91

A strong, deep bodied bull. Top 10% 200, 400, 600 Day wt, Milk. Top 20% EU Index. Pigment 100/100.

PURCHASER:..... \$.....



## ALLENDALE / DAYS WHITEFACE 2014

### Acc. ALLENDALE

#### Lot 73 - ALLENDALE BOGGABILLA H139 (P)

**H139**

**BIRTH DATE - 24/06/2012**

MOUNT DIFFICULT FELLIS Y12 (AI) (P)  
WIRRUNA ABERCORN (AI) (P)  
WIRRUNA GOLDEN VANITY R94 (AI) (P)  
**SIRE - ALLENDALE YEMEN E39 (P)**  
BRAXTON WESTWIND 120M (IMP NZL) (P)  
ALLENDAL FANCY A158 (AI) (ET) (S)  
ALLENDAL FANCY V190 (AI) (P)

ACC BLUEPRINT R70 (AI) (P)  
MERAWAH JUDGE W51 (P)  
MERAWAH COLLEEN N49 (P)  
**DAM - ALLENDALE SILVIA A19 (AI) (ET) (P)**  
LRD ENERGIZER 20Z (IMP CAN) (H)  
ALLENDAL SILVIA N155 (AI) (P)  
YAMBRO SILVIA 8 (P)

2013 SUMMER GROUP BREEDPLAN EBVS								\$ INDEX VALUE	
CE DIR	CE DTRS	GL	BWT	200W	400W	600W	MCW	SUP MKT	VALUE
<b>+1.2</b>	<b>+0.5</b>	<b>-0.8</b>	<b>+4.4</b>	<b>+26</b>	<b>+43</b>	<b>+63</b>	<b>+72</b>		+\$66
43%	37%	52%	72%	65%	65%	65%	57%	GRASS FED	+\$60
MILK	SS	CWT	EMA	RIB	RUMP	RBV%	IMF%	GRAIN FED	+\$63
<b>+10</b>	<b>+2.5</b>	<b>+38</b>						EU	+\$81
48%	55%	53%							

A muscular bull. A19 has had sons sell to \$8,500 to Shiloh Herefords. Pigment 100/100.

PURCHASER:..... \$.....

### Acc. ALLENDALE

#### Lot 74 - ALLENDALE CAPTAIN H159 (P)

**H159**

**BIRTH DATE - 09/07/2012**

EBBX CALGARY (AI) (ET) (P)  
DEBARRY CALGARY C58 (P)  
DEBARRY DALLAS X75 (AI) (P)  
**SIRE - ALLENDALE BUSHMAN F119 (P)**  
OKAWA COMMODORE 020076 (IMP NZL) (P)  
ALLENDAL DAISY C26 (AI) (P)  
ALLENDAL DAISY Z210 (P)

JAMENA EX VIEW (P)  
ALLENDAL A88 (P)  
ALLENDAL FANCY X150 (P)  
**DAM - ALLENDALE FANCY D22 (P)**  
MERAWAH JUDGE W51 (P)  
ALLENDAL FANCY A243 (P)  
ALLENDAL FANCY V190 (AI) (P)

2013 SUMMER GROUP BREEDPLAN EBVS								\$ INDEX VALUE	
CE DIR	CE DTRS	GL	BWT	200W	400W	600W	MCW	SUP MKT	VALUE
			<b>+4.2</b>	<b>+28</b>	<b>+46</b>	<b>+61</b>	<b>+51</b>		+\$74
			68%	62%	63%	60%	52%	GRASS FED	+\$73
MILK	SS	CWT	EMA	RIB	RUMP	RBV%	IMF%	GRAIN FED	+\$88
<b>+9</b>	<b>+2.4</b>		<b>+3.7</b>	<b>+0.5</b>	<b>+0.4</b>	<b>+0.5</b>	<b>+0.8</b>	EU	+\$81
40%	74%		44%	48%	53%	46%	45%		

A deep bodied, dark cloured bull. Top 5% IMF. Top 10% Scrotal Size. Top 15% Grainfed Index. Top 20% EMA, Grassfed Indexes. Pigment 100/100.

PURCHASER:..... \$.....

## ALLENDALE / DAYS WHITEFACE 2014

### Acc. DAYS WHITEFACE

**Lot 75 - DAYS DYNAMO H315 (AI) (P)**

**H315**

**BIRTH DATE - 17/08/2012**

KIDMAN BRADMAN W101 (AI) (P)  
 KIDMAN THE DON Y220 (P)  
 KIDMAN HILDA V21 (P)  
**SIRE - MELVILLE EXCEL E443 (P)**  
 LOWANNA POWER 2ET (IMP USA) (ET) (H)  
 COURALLIE 0125 CARNATION X218 ET3 (AI) (ET) (H)  
 COURALLIE CARNATION L235 ET1 (ET) (H)

VALMA GOLDRUSH V103 (AI) (P)  
 VALMA MOONWALKER (P)  
 VALMA MUSKETEER'S WATTLE V63 (AI) (P)  
**DAM - DAYS MOONSHINE E306 (P)**  
 DOONBIDDIE HUSTLER (AI) (P)  
 VALMA HUSTLER'S MOONSHINE V59 (AI) (P)  
 VALMA WESLEYS MOONSHINE R43 (P)

2013 SUMMER GROUP BREEDPLAN EBVS								\$ INDEX VALUE	
CE DIR	CE DTRS	GL	BWT	200W	400W	600W	MCW	SUP MKT	+\$103
-0.9		-1.2	+5.7	+35	+64	+93	+88	GRASS FED	+\$98
35%		70%	69%	65%	63%	62%	54%	GRAIN FED	+\$109
MILK	SS	CWT	EMA	RIB	RUMP	RBV%	IMF%	EU	+\$118
+12	+1.7	+63	+5.7	+0.8	+0.9	+1.7	+0.4		
42%	72%	51%	44%	47%	51%	45%	45%		

Long, smooth skinned muscular bull. Top 1% for carcase wt, supermarket and EU indexes. Top 5% for 400 and 600 day wt, EMA, grassfed and grainfed indexes. Pigment 100/100.

PURCHASER:..... \$.....



## ALLEDALE / DAYS WHITEFACE 2014

### Acc. DAYS WHITEFACE

**Lot 76 - DAYS BARNABY H312 (AI) (P)**

**H312**

**BIRTH DATE - 15/08/2012**

ALLEDALE ROSEMOUNT 2 (AI) (P)  
 ALLEDALE VAGABOND A74 (AI) (P)  
 SUZELLE MARLINE U54 (AI) (ET) (P)  
**SIRE - ALLEDALE WATERHOUSE D1 (P)**  
 ALLEDALE LANDLORD 3 (AI) (P)  
 ALLEDALE MARLINE X185 (P)  
 ALLEDALE MARLINE U46 (AI) (P)

ALLEDALE KING KONG 2 (S)  
 ALLEDALE NATIONAL W168 (P)  
 ALLEDALE CORA R22 (P)  
**DAM - VALMA NATIONALS PRINCESS (AI) (P)**  
 VALMA WESLEY (P)  
 VALMA WESLEYS PRINCESS W31 (P)  
 VALMA TRIUMPHS PRINCESS S68 (P)

2013 SUMMER GROUP BREEDPLAN EBVS								\$ INDEX VALUE	
CE DIR	CE DTRS	GL	BWT	200W	400W	600W	MCW	SUP MKT	+\$97
-0.4	+2.7	-1.1	+3.7	+38	+58	+83	+80	GRASS FED	+\$94
46%	40%	70%	71%	67%	67%	65%	59%	GRAIN FED	+\$109
MILK	SS	CWT	EMA	RIB	RUMP	RBY%	IMF%	EU	+\$108
+14	+2.7	+57	+4.9	+0.2	+0.4	+0.8	+1.1		
51%	75%	58%	54%	55%	59%	52%	55%		

This well muscled, deep bodied sirey bull is also homozygous poll. Top 5% for 200 day wt, scrotal size, carcass wt, EMA, IMF and all indexes. Pigment100/95.

PURCHASER:..... \$.....



**ALLENDALE / DAYS WHITEFACE 2014****Acc. DAYS WHITEFACE****Lot 77 - DAYS DELIVERANCE H173 (P)****H173****BIRTH DATE - 06/07/2012**

ALLENDALE KING KONG 2 (S)  
ALLENDALE NATIONAL W168 (P)  
ALLENDALE CORA R22 (P)  
**SIRE - PINE HILL ENERGISE E604 (AI) (P)**  
PINE HILL FLOW Z582 (AI) (P)  
PINE HILL SIRIKIT B705 (P)  
PINE HILL SIRIKIT Y635 (AI) (P)

ALLENDALE SUPERSTAR B26 (AI) (ET) (P)  
ALLENDALE ZUHKOV D191 (P)  
ALLENDALE LYDIA B15 (AI) (P)  
**DAM - DAYS FANCY F174 (P)**  
VALMA PRIDE (P)  
ALLENDALE FANCY V68 (AI) (P)  
ALLENDALE FANCY 248 (AI) (P)

2013 SUMMER GROUP BREEDPLAN EBVS								\$ INDEX VALUE	
CE DIR	CE DTRS	GL	BWT	200W	400W	600W	MCW	SUP MKT	+\$69
-6.9		+1.9	+6.3	+39	+57	+76	+73	GRASS FED	+\$62
41%		48%	70%	66%	66%	64%	56%	GRAIN FED	+\$64
MILK	SS	CWT	EMA	RIB	RUMP	RBV%	IMF%	EU	+\$84
+15	+1.9	+47	+4.1	+0.2	+0.2	+1.7	-0.4		
40%	75%	53%	47%	51%	55%	49%	49%		

Good topped heifers first calf. Top 5% for 200 day wt and RBV. Top 10% for 400 day wt and EMA. Pigment 100/100.

PURCHASER:..... \$.....

**Acc. DAYS WHITEFACE****Lot 78 - DAYS DOMINION H149 (P)****H149****BIRTH DATE - 03/06/2012**

ALLENDALE KING KONG 2 (S)  
ALLENDALE NATIONAL W168 (P)  
ALLENDALE CORA R22 (P)  
**SIRE - PINE HILL ENERGISE E604 (AI) (P)**  
PINE HILL FLOW Z582 (AI) (P)  
PINE HILL SIRIKIT B705 (P)  
PINE HILL SIRIKIT Y635 (AI) (P)

ALLENDALE ROSEMOUNT 2 (AI) (P)  
ALLENDALE VAGABOND A74 (AI) (P)  
SUZELLE MARLINE U54 (AI) (ET) (P)  
**DAM - DAYS FANCY F99 (AI) (P)**  
ALLENDALE UNRIVALLED (TW) (P)  
ALLENDALE FANCY C92 (P)  
ALLENDALE FANCY Z148 (AI) (P)

2013 SUMMER GROUP BREEDPLAN EBVS								\$ INDEX VALUE	
CE DIR	CE DTRS	GL	BWT	200W	400W	600W	MCW	SUP MKT	+\$75
-2.2	+2.3	-1.0	+4.7	+38	+49	+67	+65	GRASS FED	+\$71
42%	35%	55%	72%	67%	67%	66%	58%	GRAIN FED	+\$74
MILK	SS	CWT	EMA	RIB	RUMP	RBV%	IMF%	EU	+\$89
+18	+1.3	+49	+5.4	+0.1	+0.1	+2.0	-0.1		
42%	75%	55%	48%	52%	57%	50%	51%		

Deep bodied, dark coloured heifers first calf with EMA in top 5% of the breed. 200 day wt also in top 5% of the breed. 100/100.

PURCHASER:..... \$.....

## ALLEDALE / DAYS WHITEFACE 2014

### Acc. DAYS WHITEFACE

#### Lot 79 - DAYS H169 (S)

H169

BIRTH DATE - 30/06/2012

ALLEDALE VAGABOND A74 (AI) (P)  
ALLEDALE WATERHOUSE D1 (P)  
ALLEDALE MARLINE X185 (P)  
SIRE - DAYS WIZARD F5 (AI) (ET) (S)  
ALLEDALE NATIONAL W168 (P)  
ALLEDALE DAWN Z21 (AI) (P)  
ALLEDALE DAWN V54 (AI) (P)

OKAWA COMMODORE 020076 (IMP NZL) (P)  
ALLEDALE VALOUR B45 (AI) (P)  
ALLEDALE FLORRIE W141 (P)  
DAM - ALLEDALE FANCY D224 (P)  
VALMA PRIDE (P)  
ALLEDALE FANCY V68 (AI) (P)  
ALLEDALE FANCY 248 (AI) (P)

2013 SUMMER GROUP BREEDPLAN EBVS							
CE DIR	CE DTRS	GL	BWT	200W	400W	600W	MCW
+2.9		+0.9	+2.2	+29	+43	+58	+52
37%		50%	71%	66%	65%	63%	57%
MILK	SS	CWT	EMA	RIB	RUMP	RBV%	IMF%
+16	+1.7	+42	+3.2	+0.0	+0.2	+0.8	+0.1
42%	74%	52%	46%	50%	55%	48%	48%

\$ INDEX VALUE	
SUP MKT	+\$76
GRASS FED	+\$74
GRAIN FED	+\$78
EU	+\$87

Long bull with a good hindquarter in the best 15% of the breed for birth weight. Pigment 100/100.

PURCHASER:..... \$.....

### Acc. DAYS WHITEFACE

#### Lot 80 - DAYS ARCHIBALD H188 (TW) (P)

H188

BIRTH DATE - 25/07/2012

ALLEDALE KING KONG 2 (S)  
ALLEDALE NATIONAL W168 (P)  
ALLEDALE CORA R22 (P)  
SIRE - ALLEDALE SUPERSTAR B26 (AI) (ET) (P)  
VENA PARK SHARKA (H)  
ALLEDALE DAWN T60 (AI) (P)  
ALLEDALE DAWN N159 (AI) (P)

ALLEDALE LIVEWIRE 3 (P)  
ALLEDALE SHAMROCK (P)  
ALLEDALE HARMONY S37 (P)  
DAM - ALLEDALE FANCY Z256 (P)  
DAVIS 80U FACSIMILE 14X (IMP CAN) (P)  
ALLEDALE FANCY S19 (AI) (P)  
ALLEDALE FANCY N71 (P)

2013 SUMMER GROUP BREEDPLAN EBVS							
CE DIR	CE DTRS	GL	BWT	200W	400W	600W	MCW
-0.6	+1.0	+0.4	+4.2	+28	+46	+63	+63
45%	40%	48%	71%	65%	63%	62%	56%
MILK	SS	CWT	EMA	RIB	RUMP	RBV%	IMF%
+7	+1.4	+39	+3.3	+0.8	+1.3	+0.1	+0.6
52%	56%	52%	45%	48%	51%	47%	48%

\$ INDEX VALUE	
SUP MKT	+\$70
GRASS FED	+\$67
GRAIN FED	+\$76
EU	+\$76

Quality smooth skinned bull in top 10% of the breed for IMF. Pigment 100/100.

PURCHASER:..... \$.....



### **Days Calibre G74**

Grand Champion Dubbo 2013. Record Price selling for \$90,000 to Bowen and Melville Park.  
First sons available in 2015



### **Harvie Tailor Made 7W**

Tailor Made was selected to introduce the famous Firefly 51F into our herd. Tailor Made has consistently bred long bodied, meaty cattle with exceptional hind leg structure. Tailor Made progeny won the Sires Progeny group at Sydney Royal 2013 (see photo page 15). Tailor Made is a trait leader for 400 Day wt. Tailor Made is the sire of eight bulls in this years catalogue.